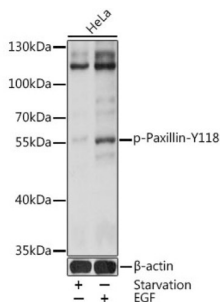


Paxillin Phospho-Tyr118 (PXN pY118) Antibody

Catalogue No.: abx000208



PXN (pY118) Antibody is a Rabbit Polyclonal antibody against PXN (pY118). This gene encodes a cytoskeletal protein involved in actin-membrane attachment at sites of cell adhesion to the extracellular matrix (focal adhesion). Alternatively spliced transcript variants encoding different isoforms have been described for this gene. These isoforms exhibit different expression pattern, and have different biochemical, as well as physiological properties (PMID:9054445).

Target:	Paxillin Phospho-Tyr118 (PXN pY118)
Clonality:	Polyclonal
Target Modification:	Tyr118
Modification:	Phosphorylation
Reactivity:	Human
Tested Applications:	ELISA, WB
Host:	Rabbit
Recommended dilutions:	ELISA: 1 µg/ml, WB: 1/500 - 1/2000. Optimal dilutions/concentrations should be determined by the end user.
Conjugation:	Unconjugated
Immunogen:	A synthetic phosphorylated peptide around Y118 of human Paxillin.
Isotype:	IgG
Form:	Liquid
Purification:	Purified by affinity chromatography.
Storage:	Aliquot and store at -20°C. Avoid repeated freeze/thaw cycles.

Datasheet

Version: 4.0.0
Revision date: 23 Jul 2025



UniProt Primary AC: P49023 ([UniProt](#), [ExPASy](#))

Gene Symbol: PXN

GeneID: [5829](#)

NCBI Accession: NP_001074324.1

KEGG: hsa:5829

String: [9606.ENSP00000267257](#)

Molecular Weight: Calculated MW: 65 kDa
Observed MW: 70 kDa

Buffer: PBS, pH 7.3, containing 0.01% thimerosal, 50% glycerol.

Concentration: > 0.2 mg/ml

Note: THIS PRODUCT IS FOR RESEARCH USE ONLY. NOT FOR USE IN DIAGNOSTIC, THERAPEUTIC OR COSMETIC PROCEDURES. NOT FOR HUMAN OR ANIMAL CONSUMPTION.

For Reference Only