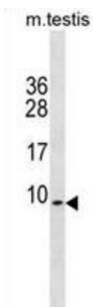


## PDE6H Antibody

Catalogue No.: abx031217



This gene encodes the inhibitory (or gamma) subunit of the cone-specific cGMP phosphodiesterase, which is a tetramer composed of two catalytic chains (alpha and beta), and two inhibitory chains (gamma). It is specifically expressed in the retina, and is involved in the transmission and amplification of the visual signal. Mutations in this gene are associated with retinal cone dystrophy type 3A (RCD3A).

**Target:** PDE6H

**Clonality:** Polyclonal

**Reactivity:** Mouse

**Tested Applications:** ELISA, WB

**Host:** Rabbit

**Recommended dilutions:** WB: 1/1000. Optimal dilutions/concentrations should be determined by the end user.

**Conjugation:** Unconjugated

**Immunogen:** KLH-conjugated synthetic peptide between 4-33 amino acids from the Central region of human PDE6H.

**Isotype:** IgG

**Form:** Liquid

**Purification:** Purified through a protein A column, followed by peptide affinity purification.

**Storage:** Aliquot and store at -20°C. Avoid repeated freeze/thaw cycles.

**UniProt Primary AC:** Q13956 ([UniProt](#), [ExPASy](#))

**KEGG:** hsa:5149

# Datasheet

Version: 3.0.0

Revision date: 20 Aug 2025



**String:** [9606.ENSF00000266395](#)

**Molecular Weight:** Calculated MW: 9.07 kDa

**Buffer:** PBS containing 0.09% sodium azide.

**Specificity:** Predicted to react with Human, Rat and Cow PDE6H.

**Note:** THIS PRODUCT IS FOR RESEARCH USE ONLY. NOT FOR USE IN DIAGNOSTIC, THERAPEUTIC OR COSMETIC PROCEDURES. NOT FOR HUMAN OR ANIMAL CONSUMPTION.

For Reference Only