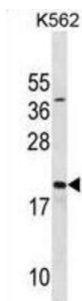


Activated RNA Polymerase II Transcriptional Coactivator p15 (SUB1) Antibody

Catalogue No.: abx031223



General coactivator that functions cooperatively with TAFs and mediates functional interactions between upstream activators and the general transcriptional machinery. May be involved in stabilizing the multiprotein transcription complex. Binds single-stranded DNA. Also binds, in vitro, non-specifically to double-stranded DNA (ds DNA).

Target:	Activated RNA Polymerase II Transcriptional Coactivator p15 (SUB1)
Clonality:	Polyclonal
Reactivity:	Human
Tested Applications:	ELISA, WB
Host:	Rabbit
Recommended dilutions:	WB: 1/1000. Optimal dilutions/concentrations should be determined by the end user.
Conjugation:	Unconjugated
Immunogen:	KLH-conjugated synthetic peptide between 18-47 amino acids from the Central region of human SUB1.
Isotype:	IgG
Form:	Liquid
Purification:	Purified through a protein A column, followed by peptide affinity purification.
Storage:	Aliquot and store at -20°C. Avoid repeated freeze/thaw cycles.
UniProt Primary AC:	P53999 (UniProt , ExPASy)

Datasheet

Version: 4.0.0
Revision date: 12 Sep 2025



Gene Symbol:	SUB1
GeneID:	10923
OMIM:	600503
HGNC:	19985
KEGG:	hsa:10923
Ensembl:	ENSG00000113387
String:	9606.ENSP00000265073
Molecular Weight:	Calculated MW: 14.4 kDa
Buffer:	PBS containing 0.09% sodium azide.
Specificity:	Predicted to react with Monkey SUB1.
Note:	THIS PRODUCT IS FOR RESEARCH USE ONLY. NOT FOR USE IN DIAGNOSTIC, THERAPEUTIC OR COSMETIC PROCEDURES. NOT FOR HUMAN OR ANIMAL CONSUMPTION.

For Reference Only