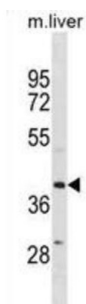


mRNA Decay Activator Protein ZFP36L1 (ZFP36L1) Antibody

Catalogue No.: abx031224



This gene is a member of the TIS11 family of early response genes. Family members are induced by various agonists such as the phorbol ester TPA and the polypeptide mitogen EGF. The gene is well conserved across species and has a promoter that contains motifs seen in other early-response genes. The encoded protein contains a distinguishing putative zinc finger domain with a repeating cys-his motif. This putative nuclear transcription factor most likely functions in regulating the response to growth factors.

Target:	mRNA Decay Activator Protein ZFP36L1 (ZFP36L1)
Clonality:	Polyclonal
Reactivity:	Mouse
Tested Applications:	ELISA, WB
Host:	Rabbit
Recommended dilutions:	WB: 1/1000. Optimal dilutions/concentrations should be determined by the end user.
Conjugation:	Unconjugated
Immunogen:	KLH-conjugated synthetic peptide between 64-93 amino acids from the N-terminal region of human ZFP36L1.
Isotype:	IgG
Form:	Liquid
Purification:	Purified through a protein A column, followed by peptide affinity purification.
Storage:	Aliquot and store at -20°C. Avoid repeated freeze/thaw cycles.
UniProt Primary AC:	Q07352 (UniProt , ExPASy)

Datasheet

Version: 2.0.0
Revision date: 19 Sep 2025



Gene Symbol: ZFP36L1

GeneID: [677](#)

OMIM: [601064](#)

HGNC: 1107

KEGG: hsa:677

Ensembl: ENSG00000185650

String: [9606.ENSP00000388402](#)

Molecular Weight: Calculated MW: 36.3 kDa

Buffer: PBS containing 0.09% sodium azide.

Specificity: Predicted to react with Rat ZFP36L1.

Note: THIS PRODUCT IS FOR RESEARCH USE ONLY. NOT FOR USE IN DIAGNOSTIC, THERAPEUTIC OR COSMETIC PROCEDURES. NOT FOR HUMAN OR ANIMAL CONSUMPTION.

For Reference Only