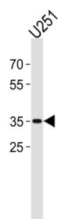
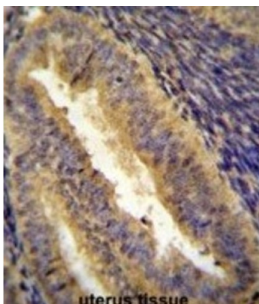
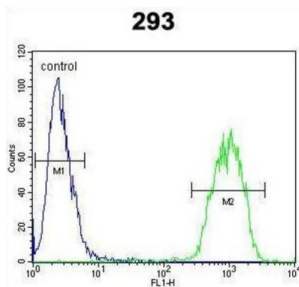


Transcription Factor Jun (JUN) Antibody

Catalogue No.: abx031246



Jun is the putative transforming gene of avian sarcoma virus 17. Jun is a protein which is highly similar to the viral protein, and which interacts directly with specific target DNA sequences to regulate gene expression. This gene is intronless and is mapped to 1p32-p31, a chromosomal region involved in both translocations and deletions in human malignancies.

Target: Transcription Factor Jun (JUN)

Clonality: Polyclonal

Reactivity: Human

Tested Applications: ELISA, WB, IHC, FCM

Host: Rabbit

Recommended dilutions: WB: 1/1000, IHC-P: 1/50 - 1/100, FCM: 1/10 - 1/50. Not tested in IHC-F. Optimal dilutions/concentrations should be determined by the end user.

Datasheet

Version: 4.0.0
Revision date: 12 Sep 2025



Conjugation:	Unconjugated
Immunogen:	KLH-conjugated synthetic peptide between 222-251 amino acids from the C-terminal region of human JUN.
Isotype:	IgG
Form:	Liquid
Purification:	Purified through a protein A column, followed by peptide affinity purification.
Storage:	Aliquot and store at -20°C. Avoid repeated freeze/thaw cycles.
UniProt Primary AC:	P05412 (UniProt , ExPASy)
Gene Symbol:	JUN
GeneID:	3725
OMIM:	165160
NCBI Accession:	NP_002219.1
HGNC:	6204
KEGG:	hsa:3725
Ensembl:	ENSG00000177606
String:	9606.ENSP00000360266
Molecular Weight:	Calculated MW: 35.7 kDa
Buffer:	PBS containing 0.09% sodium azide.
Specificity:	Predicted to react with Mouse, Rat, Cow, Pig and Chicken JUN.
Note:	THIS PRODUCT IS FOR RESEARCH USE ONLY. NOT FOR USE IN DIAGNOSTIC, THERAPEUTIC OR COSMETIC PROCEDURES. NOT FOR HUMAN OR ANIMAL CONSUMPTION.