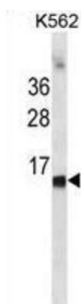


Hemoglobin Subunit Epsilon (HBE1) Antibody

Catalogue No.: abx031249



The epsilon globin gene (HBE) is normally expressed in the embryonic yolk sac: two epsilon chains together with two zeta chains (an alpha-like globin) constitute the embryonic hemoglobin Hb Gower I; two epsilon chains together with two alpha chains form the embryonic Hb Gower II. Both of these embryonic hemoglobins are normally supplanted by fetal, and later, adult hemoglobin. The five beta-like globin genes are found within a 45 kb cluster on chromosome 11 in the following order: 5'-epsilon G-gamma A-gamma delta beta-3'.

Target:	Hemoglobin Subunit Epsilon (HBE1)
Clonality:	Polyclonal
Reactivity:	Human
Tested Applications:	ELISA, WB, IHC, FCM
Host:	Rabbit
Recommended dilutions:	WB: 1/8000, IHC-P: 1/500, FCM: 1/25. Not tested in IHC-F. Optimal dilutions/concentrations should be determined by the end user.
Conjugation:	Unconjugated
Immunogen:	KLH-conjugated synthetic peptide between 55-83 amino acids from the Central region of human HBE1.
Isotype:	IgG
Form:	Liquid
Purification:	Purified through a protein A column, followed by peptide affinity purification.
Storage:	Aliquot and store at -20°C. Avoid repeated freeze/thaw cycles.
UniProt Primary AC:	P02100 (UniProt , ExPASy)

Datasheet

Version: 4.0.0

Revision date: 15 Jun 2025



Gene Symbol:	HBE1
KEGG:	hsa:3046
String:	9606.ENSP00000369586
Molecular Weight:	Calculated MW: 16.2 kDa
Buffer:	PBS containing 0.09% sodium azide.
Specificity:	Predicted to react with Rabbit HBE1.
Note:	THIS PRODUCT IS FOR RESEARCH USE ONLY. NOT FOR USE IN DIAGNOSTIC, THERAPEUTIC OR COSMETIC PROCEDURES. NOT FOR HUMAN OR ANIMAL CONSUMPTION.

For Reference Only