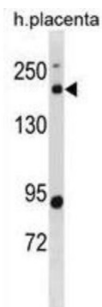


## B-Cell CLL/Lymphoma 9 Like Protein (BCL9L) Antibody

Catalogue No.: abx031265



Transcriptional regulator that acts as an activator. Promotes beta-catenin transcriptional activity. Plays a role in tumorigenesis. Enhances the neoplastic transforming activity of CTNNB1 (By similarity).

**Target:** B-Cell CLL/Lymphoma 9 Like Protein (BCL9L)

**Clonality:** Polyclonal

**Reactivity:** Human

**Tested Applications:** ELISA, WB

**Host:** Rabbit

**Recommended dilutions:** WB: 1/1000. Optimal dilutions/concentrations should be determined by the end user.

**Conjugation:** Unconjugated

**Immunogen:** KLH-conjugated synthetic peptide between 147-176 amino acids from the N-terminal region of human BCL9L.

**Isotype:** IgG

**Form:** Liquid

**Purification:** Purified through a protein A column, followed by peptide affinity purification.

**Storage:** Aliquot and store at -20°C. Avoid repeated freeze/thaw cycles.

**UniProt Primary AC:** Q86UU0 ([UniProt](#), [ExPASy](#))

**Gene Symbol:** BCL9L

# Datasheet

Version: 3.0.0

Revision date: 02 Jun 2025



**KEGG:** hsa:283149

**String:** [9606.ENSP00000335320](#)

**Molecular Weight:** Calculated MW: 157 kDa

**Buffer:** PBS containing 0.09% sodium azide.

**Note:** THIS PRODUCT IS FOR RESEARCH USE ONLY. NOT FOR USE IN DIAGNOSTIC, THERAPEUTIC OR COSMETIC PROCEDURES. NOT FOR HUMAN OR ANIMAL CONSUMPTION.

For Reference Only