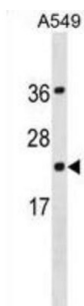


Programmed Cell Death Protein 6 (PDCD6) Antibody

Catalogue No.: abx031292



This gene encodes a calcium-binding protein belonging to the penta-EF-hand protein family. Calcium binding is important for homodimerization and for conformational changes required for binding to other protein partners. This gene product participates in T cell receptor-, Fas-, and glucocorticoid-induced programmed cell death. In mice deficient for this gene product, however, apoptosis was not blocked suggesting this gene product is functionally redundant.

| | |
|-------------------------------|---|
| Target: | Programmed Cell Death Protein 6 (PDCD6) |
| Clonality: | Polyclonal |
| Reactivity: | Human |
| Tested Applications: | ELISA, WB |
| Host: | Rabbit |
| Recommended dilutions: | WB: 1/1000. Optimal dilutions/concentrations should be determined by the end user. |
| Conjugation: | Unconjugated |
| Immunogen: | KLH-conjugated synthetic peptide between 19-47 amino acids from the N-terminal region of human PDCD6. |
| Isotype: | IgG |
| Form: | Liquid |
| Purification: | Purified through a protein A column, followed by peptide affinity purification. |
| Storage: | Aliquot and store at -20°C. Avoid repeated freeze/thaw cycles. |
| UniProt Primary AC: | O75340 (UniProt , ExPASy) |
| Gene Symbol: | PDCD6 |

Datasheet

Version: 2.0.0

Revision date: 14 Aug 2025



KEGG: hsa:10016

String: [9606.ENSP00000264933](#)

Molecular Weight: Calculated MW: 21.9 kDa

Buffer: PBS containing 0.09% sodium azide.

Note: THIS PRODUCT IS FOR RESEARCH USE ONLY. NOT FOR USE IN DIAGNOSTIC, THERAPEUTIC OR COSMETIC PROCEDURES. NOT FOR HUMAN OR ANIMAL CONSUMPTION.

For Reference Only