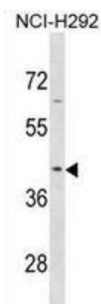


## Serpin B9 (SERPINB9) Antibody

Catalogue No.: abx031295



PI9 belongs to the large superfamily of serine proteinase inhibitors (serpins), which bind to and inactivate serine proteinases. These interactions are involved in many cellular processes, including coagulation, fibrinolysis, complement fixation, matrix remodeling, and apoptosis (Sprecher et al., 1995 [PubMed 8530382]).

**Target:** Serpin B9 (SERPINB9)

**Clonality:** Polyclonal

**Reactivity:** Human

**Tested Applications:** ELISA, WB

**Host:** Rabbit

**Recommended dilutions:** WB: 1/1000. Optimal dilutions/concentrations should be determined by the end user.

**Conjugation:** Unconjugated

**Immunogen:** KLH-conjugated synthetic peptide between 122-150 amino acids from the Central region of human SERPINB9.

**Isotype:** IgG

**Form:** Liquid

**Purification:** Purified through a protein A column, followed by peptide affinity purification.

**Storage:** Aliquot and store at -20°C. Avoid repeated freeze/thaw cycles.

**UniProt Primary AC:** P50453 ([UniProt](#), [ExPASy](#))

**KEGG:** hsa:5272

# Datasheet

Version: 2.0.0

Revision date: 13 Aug 2025



**String:** [9606.ENSF00000370074](#)

**Molecular Weight:** Calculated MW: 42.4 kDa

**Buffer:** PBS containing 0.09% sodium azide.

**Note:** THIS PRODUCT IS FOR RESEARCH USE ONLY. NOT FOR USE IN DIAGNOSTIC, THERAPEUTIC OR COSMETIC PROCEDURES. NOT FOR HUMAN OR ANIMAL CONSUMPTION.

For Reference Only