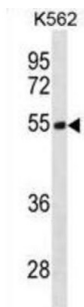


Testin (TES) Antibody

Catalogue No.: abx031304



Cancer-associated chromosomal changes often involve regions containing fragile sites. This gene maps to a common fragile site on chromosome 7q31.2 designated FRA7G. This gene is similar to mouse Testin, a testosterone-responsive gene encoding a Sertoli cell secretory protein containing three LIM domains. LIM domains are double zinc-finger motifs that mediate protein-protein interactions between transcription factors, cytoskeletal proteins and signaling proteins. Multiple protein isoforms are encoded by transcript variants of this gene.

Target:	Testin (TES)
Clonality:	Polyclonal
Reactivity:	Human
Tested Applications:	ELISA, WB
Host:	Rabbit
Recommended dilutions:	WB: 1/1000. Optimal dilutions/concentrations should be determined by the end user.
Conjugation:	Unconjugated
Immunogen:	KLH-conjugated synthetic peptide between 41-70 amino acids from the N-terminal region of human TES.
Isotype:	IgG
Form:	Liquid
Purification:	Purified through a protein A column, followed by peptide affinity purification.
Storage:	Aliquot and store at -20°C. Avoid repeated freeze/thaw cycles.
UniProt Primary AC:	Q9UGI8 (UniProt , ExPASy)

Datasheet

Version: 2.0.0

Revision date: 06 Mar 2025



Gene Symbol: TES

String: [9606.ENSP00000350937](#)

Molecular Weight: Calculated MW: 48 kDa

Buffer: PBS containing 0.09% sodium azide.

Specificity: Predicted to react with Cow, Pig, Chicken, Sheep and Horse TES.

Note: THIS PRODUCT IS FOR RESEARCH USE ONLY. NOT FOR USE IN DIAGNOSTIC, THERAPEUTIC OR COSMETIC PROCEDURES. NOT FOR HUMAN OR ANIMAL CONSUMPTION.

For Reference Only