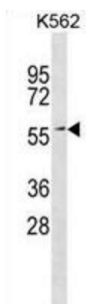


ETS2 Repressor Factor (ERF) Antibody

Catalogue No.: abx031308



Members of the ETS family of transcription factors, such as ERF, regulate cell proliferation and differentiation. They share a highly conserved DNA-binding domain, the ETS domain, that recognizes the sequence GGAA/T (de Castro et al., 1997 [PubMed 9192842]). For further information on ETS transcription factors, see ETS1 (MIM 164720).

Target: ETS2 Repressor Factor (ERF)

Clonality: Polyclonal

Reactivity: Human

Tested Applications: ELISA, WB

Host: Rabbit

Recommended dilutions: WB: 1/1000. Optimal dilutions/concentrations should be determined by the end user.

Conjugation: Unconjugated

Immunogen: KLH-conjugated synthetic peptide between 485-514 amino acids from the C-terminal region of human ERF.

Isotype: IgG

Form: Liquid

Purification: Purified through a protein A column, followed by peptide affinity purification.

Storage: Aliquot and store at -20°C. Avoid repeated freeze/thaw cycles.

UniProt Primary AC: P50548 ([UniProt](#), [ExPASy](#))

KEGG: hsa:2077

Datasheet

Version: 2.0.0

Revision date: 25 Jun 2025



String: [9606.ENSF00000222329](#)

Molecular Weight: Calculated MW: 58.7 kDa

Buffer: PBS containing 0.09% sodium azide.

Note: THIS PRODUCT IS FOR RESEARCH USE ONLY. NOT FOR USE IN DIAGNOSTIC, THERAPEUTIC OR COSMETIC PROCEDURES. NOT FOR HUMAN OR ANIMAL CONSUMPTION.

For Reference Only