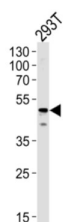
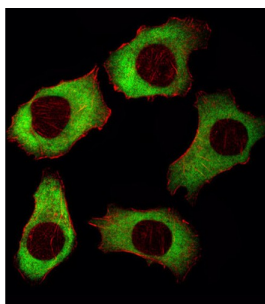


Nuclease-Sensitive Element-Binding Protein 1 (YBX1) Antibody

Catalogue No.: abx031312



Mediates pre-mRNA alternative splicing regulation. Binds to splice sites in pre-mRNA and regulates splice site selection. Binds and stabilizes cytoplasmic mRNA. Contributes to the regulation of translation by modulating the interaction between the mRNA and eukaryotic initiation factors (By similarity). Binds to promoters that contain a Y-box (5'-CTGATTGGCCAA-3'), such as HLA class II genes. Regulates the transcription of numerous genes. Promotes separation of DNA strands that contain mismatches or are modified by cisplatin. Has endonucleolytic activity and can introduce nicks or breaks into double-stranded DNA (in vitro). May play a role in DNA repair. Component of the CRD-mediated complex that promotes MYC mRNA stability.

Target: Nuclease-Sensitive Element-Binding Protein 1 (YBX1)

Clonality: Polyclonal

Reactivity: Human

Tested Applications: ELISA, WB, IF/ICC

Host: Rabbit

Recommended dilutions: WB: 1/1000, IF/ICC: 1/10 - 1/50. Optimal dilutions/concentrations should be determined by the end user.

Conjugation: Unconjugated

Immunogen: KLH-conjugated synthetic peptide between 149-178 amino acids from the Central region of human YBX1.

Isotype: IgG

Datasheet

Version: 2.0.0

Revision date: 21 Jun 2025



Form:	Liquid
Purification:	Purified through a protein A column, followed by peptide affinity purification.
Storage:	Aliquot and store at -20°C. Avoid repeated freeze/thaw cycles.
UniProt Primary AC:	P67809 (UniProt , ExPASy)
NCBI Accession:	NP_004550.2
KEGG:	hsa:4904
String:	9606.ENSP00000361626
Molecular Weight:	Calculated MW: 35.9 kDa
Buffer:	PBS containing 0.09% sodium azide.
Specificity:	Predicted to react with Mouse, Rat, Cow and Rabbit YBX1.
Note:	THIS PRODUCT IS FOR RESEARCH USE ONLY. NOT FOR USE IN DIAGNOSTIC, THERAPEUTIC OR COSMETIC PROCEDURES. NOT FOR HUMAN OR ANIMAL CONSUMPTION.

For Reference Only