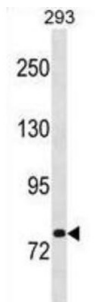


Rab Proteins Geranylgeranyltransferase Component A 1 (CHM) Antibody

Catalogue No.: abx031377



This gene encodes component A of the RAB geranylgeranyl transferase holoenzyme. In the dimeric holoenzyme, this subunit binds unprenylated Rab GTPases and then presents them to the catalytic Rab GGase subunit for the geranylgeranyl transfer reaction. Rab GTPases need to be geranylgeranylated on either one or two cysteine residues in their C-terminus to localize to the correct intracellular membrane. Mutations in this gene are a cause of choroideremia; also known as tapetochoroidal dystrophy (TCD). This X-linked disease is characterized by progressive dystrophy of the choroid, retinal pigment epithelium and retina. Alternative splicing results in multiple transcript variants encoding different isoforms.

Target:	Rab Proteins Geranylgeranyltransferase Component A 1 (CHM)
Clonality:	Polyclonal
Reactivity:	Human
Tested Applications:	ELISA, WB
Host:	Rabbit
Recommended dilutions:	WB: 1/1000. Optimal dilutions/concentrations should be determined by the end user.
Conjugation:	Unconjugated
Immunogen:	KLH-conjugated synthetic peptide between 292-320 amino acids from the Central region of human CHM.
Isotype:	IgG
Form:	Liquid
Purification:	Purified through a protein A column, followed by peptide affinity purification.
Storage:	Aliquot and store at -20°C. Avoid repeated freeze/thaw cycles.

Datasheet

Version: 3.0.0

Revision date: 12 Aug 2025



UniProt Primary AC: P24386 ([UniProt](#), [ExPASy](#))

Gene Symbol: CHM

KEGG: hsa:1121

String: [9606.ENSP00000350386](#)

Molecular Weight: Calculated MW: 73.5 kDa

Buffer: PBS containing 0.09% sodium azide.

Note: THIS PRODUCT IS FOR RESEARCH USE ONLY. NOT FOR USE IN DIAGNOSTIC, THERAPEUTIC OR COSMETIC PROCEDURES. NOT FOR HUMAN OR ANIMAL CONSUMPTION.

For Reference Only