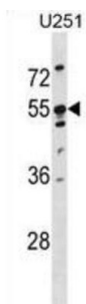


Keratin, Type II Cuticular Hb6 (KRT86) Antibody

Catalogue No.: abx031387



The protein encoded by this gene is a member of the keratin gene family. As a type II hair keratin, it is a basic protein which heterodimerizes with type I keratins to form hair and nails. The type II hair keratins are clustered in a region of chromosome 12q13 and are grouped into two distinct subfamilies based on structure similarity. One subfamily, consisting of KRTHB1, KRTHB3, and KRTHB6, is highly related. The other less-related subfamily includes KRTHB2, KRTHB4, and KRTHB5. All hair keratins are expressed in the hair follicle; this hair keratin, as well as KRTHB1 and KRTHB3, is found primarily in the hair cortex. Mutations in this gene and KRTHB1 have been observed in patients with a rare dominant hair disease, monilethrix.

Target:	Keratin, Type II Cuticular Hb6 (KRT86)
Clonality:	Polyclonal
Reactivity:	Human
Tested Applications:	ELISA, WB
Host:	Rabbit
Recommended dilutions:	WB: 1/1000. Optimal dilutions/concentrations should be determined by the end user.
Conjugation:	Unconjugated
Immunogen:	KLH-conjugated synthetic peptide between 300-327 amino acids from the Central region of human KRT86.
Isotype:	IgG
Form:	Liquid
Purification:	Purified through a protein A column, followed by peptide affinity purification.
Storage:	Aliquot and store at -20°C. Avoid repeated freeze/thaw cycles.
UniProt Primary AC:	O43790 (UniProt , ExPASy)

Datasheet

Version: 3.0.0

Revision date: 02 Jun 2025



Gene Symbol:	KRT86
KEGG:	hsa:3892
String:	9606.ENSP00000444533
Molecular Weight:	Calculated MW: 53.5 kDa
Buffer:	PBS containing 0.09% sodium azide.
Specificity:	Predicted to react with Mouse, Cow and Sheep KRT86.
Note:	THIS PRODUCT IS FOR RESEARCH USE ONLY. NOT FOR USE IN DIAGNOSTIC, THERAPEUTIC OR COSMETIC PROCEDURES. NOT FOR HUMAN OR ANIMAL CONSUMPTION.

For Reference Only