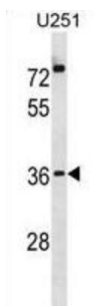


Popeye Domain-Containing Protein 3 (POPD3) Antibody

Catalogue No.: abx031390



This gene encodes a member of the POP family of proteins containing three putative transmembrane domains. This gene is expressed in cardiac and skeletal muscle and may play an important role in these tissues during development. Alternatively spliced transcript variants have been found.

Target: Popeye Domain-Containing Protein 3 (POPD3)

Clonality: Polyclonal

Reactivity: Human

Tested Applications: ELISA, WB

Host: Rabbit

Recommended dilutions: WB: 1/1000. Optimal dilutions/concentrations should be determined by the end user.

Conjugation: Unconjugated

Immunogen: KLH-conjugated synthetic peptide between 231-259 amino acids from the C-terminal region of human POPD3.

Isotype: IgG

Form: Liquid

Purification: Purified through a protein A column, followed by peptide affinity purification.

Storage: Aliquot and store at -20°C. Avoid repeated freeze/thaw cycles.

UniProt Primary AC: Q9HBV1 ([UniProt](#), [ExPASy](#))

Gene Symbol: POPDC3

Datasheet

Version: 1.0.0

Revision date: 05 Jul 2025



String: [9606.ENSF00000254765](#)

Molecular Weight: Calculated MW: 33.9 kDa

Buffer: PBS containing 0.09% sodium azide.

Note: THIS PRODUCT IS FOR RESEARCH USE ONLY. NOT FOR USE IN DIAGNOSTIC, THERAPEUTIC OR COSMETIC PROCEDURES. NOT FOR HUMAN OR ANIMAL CONSUMPTION.

For Reference Only