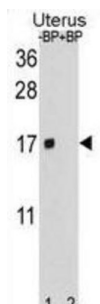


SH3 Domain Binding Glutamic Acid Rich Protein Like Protein (SH3BGRL) Antibody

Catalogue No.: abx031408



The function of this protein is unknown.

Target:	SH3 Domain Binding Glutamic Acid Rich Protein Like Protein (SH3BGRL)
Clonality:	Polyclonal
Reactivity:	Human
Tested Applications:	ELISA, WB
Host:	Rabbit
Recommended dilutions:	WB: 1/1000. Optimal dilutions/concentrations should be determined by the end user.
Conjugation:	Unconjugated
Immunogen:	KLH-conjugated synthetic peptide between 35-63 amino acids from the Central region of human SH3BGRL.
Isotype:	IgG
Form:	Liquid
Purification:	Purified through a protein A column, followed by peptide affinity purification.
Storage:	Aliquot and store at -20°C. Avoid repeated freeze/thaw cycles.
UniProt Primary AC:	O75368 (UniProt , ExPASy)
Gene Symbol:	SH3BGRL

Datasheet

Version: 2.0.0

Revision date: 05 Mar 2025



KEGG: hsa:6451

String: [9606.ENSP00000362308](#)

Molecular Weight: Calculated MW: 12.8 kDa

Buffer: PBS containing 0.09% sodium azide.

Specificity: Predicted to react with Cow and Monkey SH3BGRL.

Note: THIS PRODUCT IS FOR RESEARCH USE ONLY. NOT FOR USE IN DIAGNOSTIC, THERAPEUTIC OR COSMETIC PROCEDURES. NOT FOR HUMAN OR ANIMAL CONSUMPTION.

For Reference Only