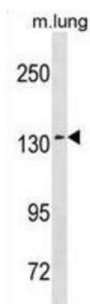


Protein Transport Protein Sec31A (SEC31A) Antibody

Catalogue No.: abx031415



The protein encoded by this gene is similar to yeast Sec31 protein. Yeast Sec31 protein is known to be a component of the COPII protein complex which is responsible for vesicle budding from endoplasmic reticulum (ER). This protein was found to colocalize with SEC13, one of the other components of COPII, in the subcellular structures corresponding to the vesicle transport function. An immunodepletion experiment confirmed that this protein is required for ER-Golgi transport. Alternative splicing results in multiple transcript variants encoding different isoforms. [provided by RefSeq].

Target:	Protein Transport Protein Sec31A (SEC31A)
Clonality:	Polyclonal
Reactivity:	Mouse
Tested Applications:	ELISA, WB
Host:	Rabbit
Recommended dilutions:	WB: 1/1000. Optimal dilutions/concentrations should be determined by the end user.
Conjugation:	Unconjugated
Immunogen:	KLH-conjugated synthetic peptide between 473-502 amino acids from the Central region of human SEC31A.
Isotype:	IgG
Form:	Liquid
Purification:	Purified through a protein A column, followed by peptide affinity purification.
Storage:	Aliquot and store at -20°C. Avoid repeated freeze/thaw cycles.
UniProt Primary AC:	O94979 (UniProt , ExPASy)

Datasheet

Version: 4.0.0

Revision date: 24 May 2025



Gene Symbol: SEC31A

GeneID: [22872](#)

OMIM: [610257](#)

HGNC: 17052

KEGG: hsa:22872

Ensembl: ENSG00000138674

String: [9606.ENSP00000378721](#)

Molecular Weight: Calculated MW: 133 kDa

Buffer: PBS containing 0.09% sodium azide.

Note: THIS PRODUCT IS FOR RESEARCH USE ONLY. NOT FOR USE IN DIAGNOSTIC, THERAPEUTIC OR COSMETIC PROCEDURES. NOT FOR HUMAN OR ANIMAL CONSUMPTION.

For Reference Only