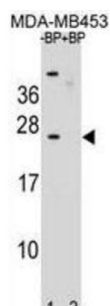


## Putative Protein SSX6 (SSX6) Antibody

Catalogue No.: abx031418



Could act as a modulator of transcription.

**Target:** Putative Protein SSX6 (SSX6)

**Clonality:** Polyclonal

**Reactivity:** Human

**Tested Applications:** ELISA, WB

**Host:** Rabbit

**Recommended dilutions:** WB: 1/1000. Optimal dilutions/concentrations should be determined by the end user.

**Conjugation:** Unconjugated

**Immunogen:** KLH-conjugated synthetic peptide between 62-91 amino acids from the Central region of human SSX6.

**Isotype:** IgG

**Form:** Liquid

**Purification:** Purified through a protein A column, followed by peptide affinity purification.

**Storage:** Aliquot and store at -20°C. Avoid repeated freeze/thaw cycles.

**UniProt Primary AC:** Q7RTT6 ([UniProt](#), [ExPASy](#))

**Gene Symbol:** SSX6P

**Molecular Weight:** Calculated MW: 21.7 kDa

# Datasheet

Version: 3.0.0

Revision date: 16 Aug 2025



**Buffer:** PBS containing 0.09% sodium azide.

**Note:** THIS PRODUCT IS FOR RESEARCH USE ONLY. NOT FOR USE IN DIAGNOSTIC, THERAPEUTIC OR COSMETIC PROCEDURES. NOT FOR HUMAN OR ANIMAL CONSUMPTION.

For Reference Only