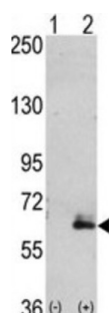
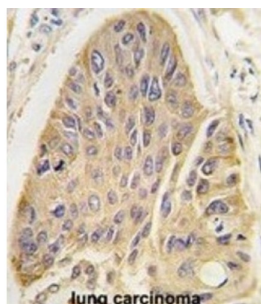


Microtubule Associated Protein 2 (MAP2) Antibody

Catalogue No.: abx031436



This gene encodes a protein that belongs to the microtubule-associated protein family. The proteins of this family are thought to be involved in microtubule assembly, which is an essential step in neurogenesis. The exact function of this gene is still unknown. The products of similar genes in rat and mouse are neuron-specific cytoskeletal proteins that are enriched in dendrites, implicating a role in determining and stabilizing dendritic shape during neuron development.

Target: Microtubule Associated Protein 2 (MAP2)

Clonality: Polyclonal

Reactivity: Human

Tested Applications: ELISA, WB, IHC

Host: Rabbit

Recommended dilutions: WB: 1/1000, IHC-P: 1/50 - 1/100. Not tested in IHC-F. Optimal dilutions/concentrations should be determined by the end user.

Conjugation: Unconjugated

Immunogen: KLH-conjugated synthetic peptide between 1766-1796 amino acids from the C-terminal region of human MAP2.

Isotype: IgG

Datasheet

Version: 3.0.0

Revision date: 04 Oct 2025



Form:	Liquid
Purification:	Purified through a protein G column, eluted with high and low pH buffers and neutralized immediately, followed by dialysis against PBS.
Storage:	Aliquot and store at -20°C. Avoid repeated freeze/thaw cycles.
UniProt Primary AC:	P11137 (UniProt , ExPASy)
KEGG:	hsa:4133
String:	9606.ENSP00000353508
Molecular Weight:	Calculated MW: 200 kDa
Buffer:	PBS containing 0.09% sodium azide.
Note:	THIS PRODUCT IS FOR RESEARCH USE ONLY. NOT FOR USE IN DIAGNOSTIC, THERAPEUTIC OR COSMETIC PROCEDURES. NOT FOR HUMAN OR ANIMAL CONSUMPTION.

For Reference Only