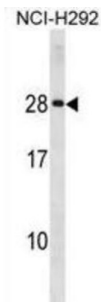


HLA Class II Histocompatibility Antigen, DQ Alpha 2 Chain (HLA-DQA2) Antibody

Catalogue No.: abx031442



This gene belongs to the HLA class II alpha chain family. The encoded protein forms a heterodimer with a class II beta chain. It is located in intracellular vesicles and plays a central role in the peptide loading of MHC class II molecules by helping to release the CLIP molecule from the peptide binding site. Class II molecules are expressed in antigen presenting cells (B lymphocytes, dendritic cells, macrophages) and are used to present antigenic peptides on the cell surface to be recognized by CD4 T-cells. [provided by RefSeq].

Target: HLA Class II Histocompatibility Antigen, DQ Alpha 2 Chain (HLA-DQA2)

Clonality: Polyclonal

Reactivity: Human

Tested Applications: ELISA, WB

Host: Rabbit

Recommended dilutions: WB: 1/1000. Optimal dilutions/concentrations should be determined by the end user.

Conjugation: Unconjugated

Immunogen: KLH-conjugated synthetic peptide between 39-66 amino acids from the Central region of human HLA-DQA2.

Isotype: IgG

Form: Liquid

Purification: Purified through a protein A column, followed by peptide affinity purification.

Storage: Aliquot and store at -20°C. Avoid repeated freeze/thaw cycles.

UniProt Primary AC: P01906 ([UniProt](#), [ExPASy](#))

Datasheet

Version: 2.0.0
Revision date: 13 Oct 2025



Gene Symbol: HLA-DQA2

GeneID: [3118](#)

OMIM: [613503](#)

NCBI Accession: NP_064440.1

HGNC: 4943

KEGG: hsa:3118

Ensembl: ENSG00000206301

String: [9606.ENSP00000364076](#)

Molecular Weight: Calculated MW: 28 kDa

Buffer: PBS containing 0.09% sodium azide.

Note: THIS PRODUCT IS FOR RESEARCH USE ONLY. NOT FOR USE IN DIAGNOSTIC, THERAPEUTIC OR COSMETIC PROCEDURES. NOT FOR HUMAN OR ANIMAL CONSUMPTION.

For Reference Only