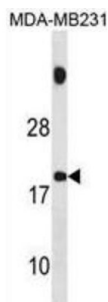


SPNXB Antibody

Catalogue No.: abx031465



Temporally regulated transcription and translation of several testis-specific genes is required to initiate the series of molecular and morphological changes in the male germ cell lineage necessary for the formation of mature spermatozoa. This gene is a member of the SPANX family of cancer/testis-associated genes, which are located in a cluster on chromosome X. The SPANX genes encode differentially expressed testis-specific proteins that localize to various subcellular compartments. This particular gene maps to chromosome X in a head-to-tail orientation with SPANX family member B1 and appears to be a duplication of that locus. The SPANXB genes are unique members of this gene family, since they contain an additional 18 nt in their coding region compared to the majority of family members. Although the protein encoded by this gene contains consensus nuclear localization signals, the major site for subcellular localization of expressed protein is in the cytoplasmic droplets of ejaculated spermatozoa. This protein provides a biochemical marker for studying the unique structures in spermatozoa, while attempting to further define its role in spermatogenesis.

Target: SPNXB

Clonality: Polyclonal

Reactivity: Human

Tested Applications: ELISA, WB

Host: Rabbit

Recommended dilutions: WB: 1/1000. Optimal dilutions/concentrations should be determined by the end user.

Conjugation: Unconjugated

Immunogen: KLH-conjugated synthetic peptide between 17-47 amino acids from the Central region of human SPNXB.

Isotype: IgG

Form: Liquid

Purification: Purified through a protein A column, followed by peptide affinity purification.

Datasheet

Version: 2.0.0

Revision date: 11 Sep 2025



Storage: Aliquot and store at -20°C. Avoid repeated freeze/thaw cycles.

UniProt Primary AC: Q9NS25 ([UniProt](#), [ExPASy](#))

Gene Symbol: SPANXB1

String: [9606.ENSP00000405202](#)

Molecular Weight: Calculated MW: 11.8 kDa

Buffer: PBS containing 0.09% sodium azide.

Note: THIS PRODUCT IS FOR RESEARCH USE ONLY. NOT FOR USE IN DIAGNOSTIC, THERAPEUTIC OR COSMETIC PROCEDURES. NOT FOR HUMAN OR ANIMAL CONSUMPTION.

For Reference Only