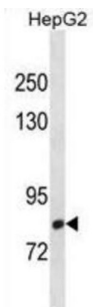


C-Maf-Inducing Protein (CMIP) Antibody

Catalogue No.: abx031466



CMIP plays a role in T-cell signaling pathway. Isoform 2 may play a role in T-helper 2 (Th2) signaling pathway and seems to represent the first proximal signaling protein that links T-cell receptor-mediated signal to the activation of c-Maf Th2 specific factor.

Target: C-Maf-Inducing Protein (CMIP)

Clonality: Polyclonal

Reactivity: Human

Tested Applications: ELISA, WB

Host: Rabbit

Recommended dilutions: WB: 1/1000. Optimal dilutions/concentrations should be determined by the end user.

Conjugation: Unconjugated

Immunogen: KLH-conjugated synthetic peptide between 735-764 amino acids from the C-terminal region of human CMIP.

Isotype: IgG

Form: Liquid

Purification: Purified through a protein A column, followed by peptide affinity purification.

Storage: Aliquot and store at -20°C. Avoid repeated freeze/thaw cycles.

UniProt Primary AC: Q8IY22 ([UniProt](#), [ExPASy](#))

Gene Symbol: CMIP

Datasheet

Version: 2.0.0

Revision date: 26 Jun 2025



KEGG: hsa:80790

String: [9606.ENSP00000446100](#)

Molecular Weight: Calculated MW: 86.3 kDa

Buffer: PBS containing 0.09% sodium azide.

Specificity: Predicted to react with Mouse and Xenopus CMIP.

Note: THIS PRODUCT IS FOR RESEARCH USE ONLY. NOT FOR USE IN DIAGNOSTIC, THERAPEUTIC OR COSMETIC PROCEDURES. NOT FOR HUMAN OR ANIMAL CONSUMPTION.

For Reference Only