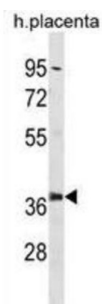


26S Proteasome Non-ATPase Regulatory Subunit 6 (PSMD6) Antibody

Catalogue No.: abx031479



Acts as a regulatory subunit of the 26S proteasome which is involved in the ATP-dependent degradation of ubiquitinated proteins. This gene encodes a member of the protease subunit S10 family. The encoded protein is a subunit of the 26S proteasome which colocalizes with DNA damage foci and is involved in the ATP-dependent degradation of ubiquitinated proteins.

Target:	26S Proteasome Non-ATPase Regulatory Subunit 6 (PSMD6)
Clonality:	Polyclonal
Reactivity:	Human
Tested Applications:	ELISA, WB
Host:	Rabbit
Recommended dilutions:	WB: 1/1000. Optimal dilutions/concentrations should be determined by the end user.
Conjugation:	Unconjugated
Immunogen:	KLH-conjugated synthetic peptide between 154-182 amino acids from the Central region of human PSMD6.
Isotype:	IgG
Form:	Liquid
Purification:	Purified through a protein A column, followed by peptide affinity purification.
Storage:	Aliquot and store at -20°C. Avoid repeated freeze/thaw cycles.
UniProt Primary AC:	Q15008 (UniProt , ExPASy)
Gene Symbol:	PSMD6

Datasheet

Version: 2.0.0

Revision date: 27 Sep 2025



GeneID:	9861
OMIM:	617857
NCBI Accession:	NP_001258708.1, NM_001271779.1, NP_001258709.1, NM_001271780.1, NP_001258710.1, NM_001271781.1, NP_055629.1, NM_014814.2
HGNC:	9564
KEGG:	hsa:9861
Ensembl:	ENSG00000163636
Molecular Weight:	Calculated MW: 45.5 kDa
Buffer:	PBS containing 0.09% sodium azide.
Specificity:	Predicted to react with Mouse, Cow and Drosophila PSMD6.
Note:	THIS PRODUCT IS FOR RESEARCH USE ONLY. NOT FOR USE IN DIAGNOSTIC, THERAPEUTIC OR COSMETIC PROCEDURES. NOT FOR HUMAN OR ANIMAL CONSUMPTION.

For Reference Only