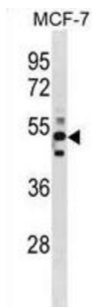


Chimerin 1 (CHN1) Antibody

Catalogue No.: abx031482



This gene encodes GTPase-activating protein for p21-rac and a phorbol ester receptor. It plays an important role in ocular motor axon pathfinding. Heterozygous missense mutations in this gene cause Duane's retraction syndrome 2 (DURS2). Multiple transcript variants encoding different isoforms have been found for this gene.

Target: Chimerin 1 (CHN1)

Clonality: Polyclonal

Reactivity: Human

Tested Applications: ELISA, WB

Host: Rabbit

Recommended dilutions: WB: 1/1000. Optimal dilutions/concentrations should be determined by the end user.

Conjugation: Unconjugated

Immunogen: KLH-conjugated synthetic peptide between 1-30 amino acids from the N-terminal region of human CHN1.

Isotype: IgG

Form: Liquid

Purification: Purified through a protein A column, followed by peptide affinity purification.

Storage: Aliquot and store at -20°C. Avoid repeated freeze/thaw cycles.

UniProt Primary AC: P15882 ([UniProt](#), [ExPASy](#))

KEGG: hsa:1123

Datasheet

Version: 2.0.0

Revision date: 18 Mar 2025



String: [9606.ENSPO0000386741](#)

Molecular Weight: Calculated MW: 53.2 kDa

Buffer: PBS containing 0.09% sodium azide.

Specificity: Predicted to react with Mouse CHN1.

Note: THIS PRODUCT IS FOR RESEARCH USE ONLY. NOT FOR USE IN DIAGNOSTIC, THERAPEUTIC OR COSMETIC PROCEDURES. NOT FOR HUMAN OR ANIMAL CONSUMPTION.

For Reference Only