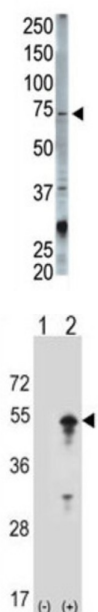


Signal Transducing Adaptor Molecule (STAM) Antibody

Catalogue No.: abx031568



Stimulation of cells with cytokines initiates a signal transduction cascade involving cytokine receptors, Janus kinases (JAKs) and signal transducers and activators of transcription (STATs). STAM for 'signal-transducing adaptor molecule, induced after stimulation of cells with cytokine IL2, is a component of signal transduction downstream of JAK3.1 Human STAM cDNA cloned from a T-cell cDNA library encodes a 540-amino acid protein precipitated by anti-phosphotyrosine. Northern blot analysis indicates that STAM is expressed as a 2.9-kb message in a wide variety of tissue and cell types. The STAM sequence contains a Src-homology 3 (SH3) domain and an immunoreceptor tyrosine-based activation motif (ITAM). It has been suggested that STAM acts as an adaptor molecule in signal transduction pathways from cytokine receptors.

Target: Signal Transducing Adaptor Molecule (STAM)

Clonality: Polyclonal

Reactivity: Human, Mouse

Tested Applications: ELISA, WB

Host: Rabbit

Recommended dilutions: WB: 1/1000. Optimal dilutions/concentrations should be determined by the end user.

Conjugation: Unconjugated

Immunogen: KLH-conjugated synthetic peptide between 1-30 amino acids from the N-terminal region of human STAM.

Datasheet

Version: 3.0.0
Revision date: 12 Aug 2025



Isotype:	IgG
Form:	Liquid
Purification:	Purified through a protein G column, eluted with high and low pH buffers and neutralized immediately, followed by dialysis against PBS.
Storage:	Aliquot and store at -20°C. Avoid repeated freeze/thaw cycles.
UniProt Primary AC:	Q92783 (UniProt , ExPASy)
NCBI Accession:	NP_003464.1
KEGG:	hsa:8027
String:	9606.ENSP00000366746
Molecular Weight:	Calculated MW: 59.2 kDa
Buffer:	PBS containing 0.09% sodium azide.
Note:	THIS PRODUCT IS FOR RESEARCH USE ONLY. NOT FOR USE IN DIAGNOSTIC, THERAPEUTIC OR COSMETIC PROCEDURES. NOT FOR HUMAN OR ANIMAL CONSUMPTION.

For Reference Only