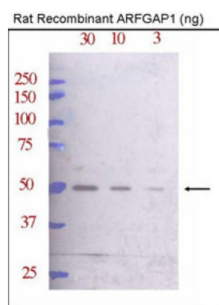
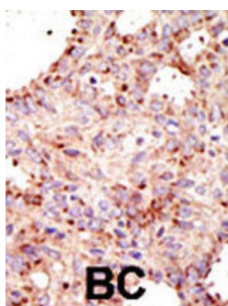
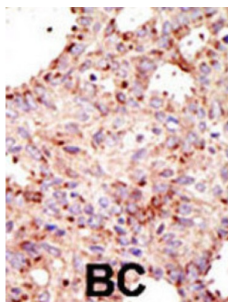


ADP-Ribosylation Factor GTPase Activating Protein 1 (ARFGAP1) Antibody

Catalogue No.: abx031576



ARFGAP1 is a GTPase-activating protein (GAP) which associates with the Golgi apparatus and which interacts with ADP-ribosylation factor 1 (ARF1). The encoded protein promotes hydrolysis of ARF1-bound GTP and is required for the dissociation of coat proteins from Golgi-derived membranes and vesicles. Dissociation of the coat proteins is required for the fusion of these vesicles with target compartments. The activity of this protein is stimulated by phosphoinositides and inhibited by phosphatidylcholine.

Target:	ADP-Ribosylation Factor GTPase Activating Protein 1 (ARFGAP1)
Clonality:	Polyclonal
Reactivity:	Human
Tested Applications:	ELISA, WB, IHC
Host:	Rabbit

Datasheet

Version: 2.0.0
Revision date: 04 Jul 2025



Recommended dilutions: WB: 1/1000, IHC-P: 1/50 - 1/100. Not tested in IHC-F. Optimal dilutions/concentrations should be determined by the end user.

Conjugation: Unconjugated

Immunogen: KLH-conjugated synthetic peptide between 377-406 amino acids from the C-terminal region of human ARFGAP1.

Isotype: IgG

Form: Liquid

Purification: Purified through a protein G column, eluted with high and low pH buffers and neutralized immediately, followed by dialysis against PBS.

Storage: Aliquot and store at -20°C. Avoid repeated freeze/thaw cycles.

UniProt Primary AC: Q8N6T3 ([UniProt](#), [ExPASy](#))

NCBI Accession: NP_001268411.1, NP_001268412.1, NP_001268413.1, NP_060679.1, NP_783202.1

KEGG: hsa:55738

String: [9606.ENSP00000314615](#)

Molecular Weight: Calculated MW: 44.7 kDa

Buffer: PBS containing 0.09% sodium azide.

Note: THIS PRODUCT IS FOR RESEARCH USE ONLY. NOT FOR USE IN DIAGNOSTIC, THERAPEUTIC OR COSMETIC PROCEDURES. NOT FOR HUMAN OR ANIMAL CONSUMPTION.