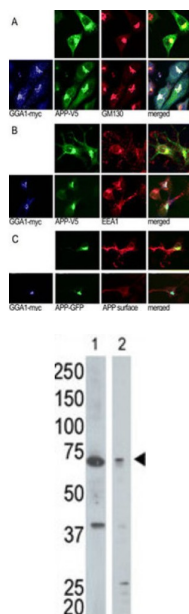


ADP Ribosylation Factor Binding Protein GGA1 (GGA1) Antibody

Catalogue No.: abx031582



GGA1 is a member of the Golgi-localized, gamma adaptin ear-containing, ARF-binding (GGA) protein family. Members of this family are ubiquitous coat proteins that regulate the trafficking of proteins between the trans-Golgi network and the lysosome. These proteins share an amino-terminal VHS domain which mediates sorting of the mannose 6-phosphate receptors at the trans-Golgi network. They also contain a carboxy-terminal region with homology to the ear domain of gamma-adaptins.

Target: ADP Ribosylation Factor Binding Protein GGA1 (GGA1)

Clonality: Polyclonal

Reactivity: Human, Mouse

Tested Applications: ELISA, WB, IF/ICC

Host: Rabbit

Recommended dilutions: WB: 1/1000, IF/ICC: 1/10 - 1/50. Optimal dilutions/concentrations should be determined by the end user.

Conjugation: Unconjugated

Immunogen: KLH-conjugated synthetic peptide between 1-30 amino acids from the N-terminal region of human GGA1.

Isotype: IgG

Datasheet

Version: 5.0.0
Revision date: 13 Jul 2025



Form:	Liquid
Purification:	Purified through a protein G column, eluted with high and low pH buffers and neutralized immediately, followed by dialysis against PBS.
Storage:	Aliquot and store at -20°C. Avoid repeated freeze/thaw cycles.
UniProt Primary AC:	Q9UJY5 (UniProt , ExPASy)
NCBI Accession:	NP_001001560.1, NP_001001561.1, NP_001166158.1, NP_001166159.1, NP_037497.1
String:	9606.ENSP00000341344
Molecular Weight:	Calculated MW: 70.4 kDa
Buffer:	PBS containing 0.09% sodium azide.
Note:	THIS PRODUCT IS FOR RESEARCH USE ONLY. NOT FOR USE IN DIAGNOSTIC, THERAPEUTIC OR COSMETIC PROCEDURES. NOT FOR HUMAN OR ANIMAL CONSUMPTION.

For Reference Only