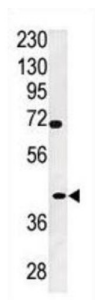


Protein-Tyrosine Sulfotransferase 2 (TPST2) Antibody

Catalogue No.: abx031585



The ADP-ribosylation factor (Arf) family are highly conserved members of the Ras superfamily of regulatory GTP-binding proteins. Arf proteins participate in routing of intracellular proteins to and within the Golgi complex. Cellular functions include maintenance of organelle integrity, coat protein assembly, as an activator of phospholipase D. The Arf family is divided functionally into the Arf and the Arf-like (Arl) proteins. The ARF proteins are categorized as class I (ARF1, ARF2, and ARF3), class II (ARF4 and ARF5) and class III (ARF6) and members of each class share a common gene organization.

Target:	Protein-Tyrosine Sulfotransferase 2 (TPST2)
Clonality:	Polyclonal
Reactivity:	Human
Tested Applications:	ELISA, WB
Host:	Rabbit
Recommended dilutions:	WB: 1/1000. Optimal dilutions/concentrations should be determined by the end user.
Conjugation:	Unconjugated
Immunogen:	KLH-conjugated synthetic peptide between 328-358 amino acids from the C-terminal region of human TPST2.
Isotype:	IgG
Form:	Liquid
Purification:	Purified through a protein G column, eluted with high and low pH buffers and neutralized immediately, followed by dialysis against PBS.
Storage:	Aliquot and store at -20°C. Avoid repeated freeze/thaw cycles.
UniProt Primary AC:	O60704 (UniProt , ExPASy)

Datasheet

Version: 3.0.0

Revision date: 15 Jul 2025



Gene Symbol: TPST2

KEGG: hsa:8459

String: [9606.ENSP00000339813](#)

Molecular Weight: Calculated MW: 41.9 kDa

Buffer: PBS containing 0.09% sodium azide.

Specificity: Predicted to react with Monkey TPST2.

Note: THIS PRODUCT IS FOR RESEARCH USE ONLY. NOT FOR USE IN DIAGNOSTIC, THERAPEUTIC OR COSMETIC PROCEDURES. NOT FOR HUMAN OR ANIMAL CONSUMPTION.

For Reference Only