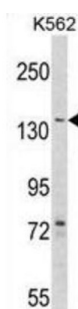
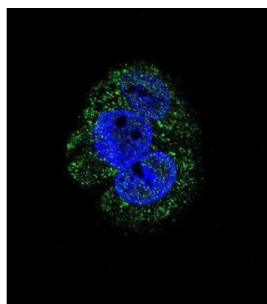


## Glycogen Debranching Enzyme (AGL) Antibody

Catalogue No.: abx031588



AGL is a glycogen debrancher enzyme which is involved in glycogen degradation. This enzyme has two independent catalytic activities which occur at different sites on the protein: a 4- $\alpha$ -glucotransferase activity and a amylo-1, 6-glucosidase activity. Mutations in the AGL gene are associated with glycogen storage disease although a wide range of enzymatic and clinical variability occurs which may be due to tissue-specific alternative splicing.

**Target:** Glycogen Debranching Enzyme (AGL)

**Clonality:** Polyclonal

**Reactivity:** Human

**Tested Applications:** ELISA, WB, IF/ICC

**Host:** Rabbit

**Recommended dilutions:** WB: 1/1000, IF/ICC: 1/10 - 1/50. Optimal dilutions/concentrations should be determined by the end user.

**Conjugation:** Unconjugated

**Immunogen:** KLH-conjugated synthetic peptide between 357-387 amino acids from the Central region of human AGL.

**Isotype:** IgG

# Datasheet

Version: 3.0.0  
Revision date: 22 Jun 2025



<b>Form:</b>	Liquid
<b>Purification:</b>	Purified through a protein G column, eluted with high and low pH buffers and neutralized immediately, followed by dialysis against PBS.
<b>Storage:</b>	Aliquot and store at -20°C. Avoid repeated freeze/thaw cycles.
<b>UniProt Primary AC:</b>	P35573 ( <a href="#">UniProt</a> , <a href="#">ExPASy</a> )
<b>NCBI Accession:</b>	NP_000019.2, NP_000633.2, NP_000634.2, NP_000635.2, NP_000636.2, NP_000637.2
<b>KEGG:</b>	hsa:178
<b>String:</b>	<a href="#">9606.ENSP00000294724</a>
<b>Molecular Weight:</b>	Calculated MW: 175 kDa
<b>Buffer:</b>	PBS containing 0.09% sodium azide.
<b>Note:</b>	THIS PRODUCT IS FOR RESEARCH USE ONLY. NOT FOR USE IN DIAGNOSTIC, THERAPEUTIC OR COSMETIC PROCEDURES. NOT FOR HUMAN OR ANIMAL CONSUMPTION.