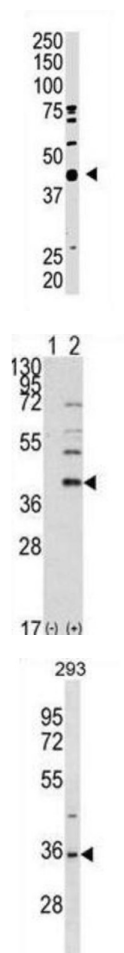


SUMO-Activating Enzyme Subunit 1 (SAE1) Antibody

Catalogue No.: abx031607



The dimeric enzyme AOS1 acts as a an E1 ligase for SUMO1, SUMO2, SUMO3, and probably SUMO4. It mediates ATP-dependent activation of SUMO proteins and formation of a thioester with a conserved cysteine residue on SAE2.

Target: SUMO-Activating Enzyme Subunit 1 (SAE1)

Clonality: Polyclonal

Reactivity: Human, Mouse

Tested Applications: ELISA, WB, IHC

Host: Rabbit

Recommended dilutions: WB: 1/1000, IHC-P: 1/50 - 1/100. Not tested in IHC-F. Optimal dilutions/concentrations should be determined by the end user.

Datasheet

Version: 3.0.0
Revision date: 11 Sep 2025



Conjugation:	Unconjugated
Immunogen:	KLH-conjugated synthetic peptide between 300-329 amino acids from the C-terminal region of human SAE1 (AOS1).
Isotype:	IgG
Form:	Liquid
Purification:	Purified through a protein G column, eluted with high and low pH buffers and neutralized immediately, followed by dialysis against PBS.
Storage:	Aliquot and store at -20°C. Avoid repeated freeze/thaw cycles.
UniProt Primary AC:	Q9UBE0 (UniProt , ExPASy)
String:	9606.ENSP00000270225
Molecular Weight:	Calculated MW: 38.5 kDa
Buffer:	PBS containing 0.09% sodium azide.
Specificity:	Predicted to react with Rat and Cow SAE1.
Note:	THIS PRODUCT IS FOR RESEARCH USE ONLY. NOT FOR USE IN DIAGNOSTIC, THERAPEUTIC OR COSMETIC PROCEDURES. NOT FOR HUMAN OR ANIMAL CONSUMPTION.