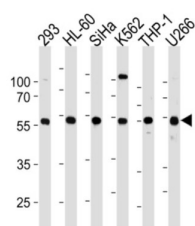
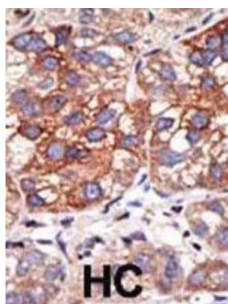


Yin Yang 1 (YY1) Antibody

Catalogue No.: abx031613



YY1 is a ubiquitously distributed transcription factor belonging to the GLI-Kruppel class of zinc finger proteins. The protein is involved in repressing and activating a diverse number of promoters. YY1 may direct histone deacetylases and histone acetyltransferases to a promoter in order to activate or repress the promoter, thus implicating histone modification in the function of YY1.

Target: Yin Yang 1 (YY1)

Clonality: Polyclonal

Reactivity: Human, Mouse, Rat

Tested Applications: ELISA, WB

Host: Rabbit

Recommended dilutions: WB: 1/1000. Optimal dilutions/concentrations should be determined by the end user.

Conjugation: Unconjugated

Immunogen: KLH-conjugated synthetic peptide between 74-104 amino acids from the N-terminal region of human YY1.

Isotype: IgG

Form: Liquid

Datasheet

Version: 2.0.0
Revision date: 25 Aug 2025



| | |
|----------------------------|--|
| Purification: | Purified through a protein G column, eluted with high and low pH buffers and neutralized immediately, followed by dialysis against PBS. |
| Storage: | Aliquot and store at -20°C. Avoid repeated freeze/thaw cycles. |
| UniProt Primary AC: | P25490 (UniProt , ExPASy) |
| NCBI Accession: | NP_003394.1 |
| KEGG: | hsa:7528 |
| String: | 9606.ENSP00000262238 |
| Molecular Weight: | Calculated MW: 44.7 kDa |
| Buffer: | PBS containing 0.09% sodium azide. |
| Specificity: | Predicted to react with Mouse YY1. |
| Note: | THIS PRODUCT IS FOR RESEARCH USE ONLY. NOT FOR USE IN DIAGNOSTIC, THERAPEUTIC OR COSMETIC PROCEDURES. NOT FOR HUMAN OR ANIMAL CONSUMPTION. |

For Reference Only