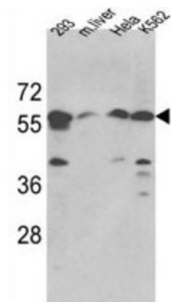


Serine Palmitoyltransferase, Long Chain Base Subunit 1 (SPTLC1) Antibody

Catalogue No.: abx031622



Serine palmitoyltransferase (SPT) is the key enzyme in sphingolipid biosynthesis. It catalyzes the pyridoxal-5-prime-phosphate-dependent condensation of L-serine and palmitoyl-CoA to 3-oxosphinganine.

Target:	Serine Palmitoyltransferase, Long Chain Base Subunit 1 (SPTLC1)
Clonality:	Polyclonal
Reactivity:	Human, Mouse
Tested Applications:	ELISA, WB
Host:	Rabbit
Recommended dilutions:	WB: 1/1000. Optimal dilutions/concentrations should be determined by the end user.
Conjugation:	Unconjugated
Immunogen:	KLH-conjugated synthetic peptide between 26-57 amino acids from the N-terminal region of human SPTLC1.
Isotype:	IgG
Form:	Liquid
Purification:	Purified through a protein G column, eluted with high and low pH buffers and neutralized immediately, followed by dialysis against PBS.
Storage:	Aliquot and store at -20°C. Avoid repeated freeze/thaw cycles.
UniProt Primary AC:	O15269 (UniProt , ExPASy)
Gene Symbol:	SPTLC1

Datasheet

Version: 4.0.0

Revision date: 06 Mar 2025



KEGG: hsa:10558

String: [9606.ENSP00000262554](#)

Molecular Weight: Calculated MW: 52.7 kDa

Buffer: PBS containing 0.09% sodium azide.

Specificity: Predicted to react with Monkey SPTLC1.

Note: THIS PRODUCT IS FOR RESEARCH USE ONLY. NOT FOR USE IN DIAGNOSTIC, THERAPEUTIC OR COSMETIC PROCEDURES. NOT FOR HUMAN OR ANIMAL CONSUMPTION.

For Reference Only