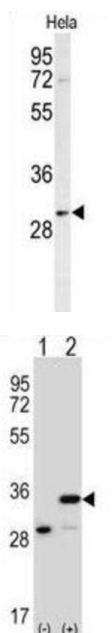
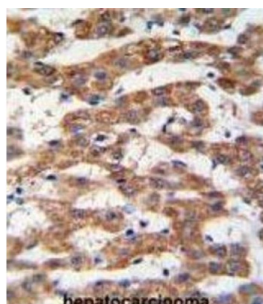


Prohibitin (PHB) Antibody

Catalogue No.: abx031642



Prohibitin is an evolutionarily conserved protein that is ubiquitously expressed. It is thought to be a negative regulator of cell proliferation and may be a tumor suppressor. Mutations have been linked to sporadic breast cancer. Prohibitin is expressed as two transcripts with varying lengths of 3' untranslated region.

Target: Prohibitin (PHB)

Clonality: Polyclonal

Reactivity: Human

Tested Applications: ELISA, WB, IHC, IF/ICC, FCM

Host: Rabbit

Recommended dilutions: WB: 1/1000, IHC-P: 1/10 - 1/50, IF/ICC: 1/10 - 1/50, FCM: 1/10 - 1/50. Not tested in IHC-F. Optimal dilutions/concentrations should be determined by the end user.

Datasheet

Version: 3.0.0
Revision date: 20 Aug 2025



Conjugation:	Unconjugated
Immunogen:	KLH-conjugated synthetic peptide between 89-117 amino acids from the Central region of human PHB.
Isotype:	IgG
Form:	Liquid
Purification:	Purified Rabbit Polyclonal Antibody.
Storage:	Aliquot and store at -20°C. Avoid repeated freeze/thaw cycles.
UniProt Primary AC:	P35232 (UniProt , ExPASy)
KEGG:	hsa:5245
String:	9606.ENSP00000479488
Molecular Weight:	Calculated MW: 29.8 kDa
Buffer:	PBS containing 0.09% sodium azide.
Specificity:	Predicted to react with Cow and Chicken PHB.
Note:	THIS PRODUCT IS FOR RESEARCH USE ONLY. NOT FOR USE IN DIAGNOSTIC, THERAPEUTIC OR COSMETIC PROCEDURES. NOT FOR HUMAN OR ANIMAL CONSUMPTION.