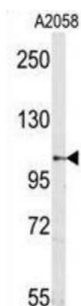


## M Sema5a Antibody

Catalogue No.: abx031644



Members of the semaphorin protein family, such as SEMA5A, are involved in axonal guidance during neural development.

**Target:** M Sema5a

**Clonality:** Polyclonal

**Reactivity:** Mouse

**Tested Applications:** ELISA, WB

**Host:** Rabbit

**Recommended dilutions:** WB: 1/1000. Optimal dilutions/concentrations should be determined by the end user.

**Conjugation:** Unconjugated

**Immunogen:** KLH-conjugated synthetic peptide selected from the N-terminal region of mouse Sema5a.

**Isotype:** IgG

**Form:** Liquid

**Purification:** Purified through a protein G column, eluted with high and low pH buffers and neutralized immediately, followed by dialysis against PBS.

**Storage:** Aliquot and store at -20°C. Avoid repeated freeze/thaw cycles.

**UniProt Primary AC:** Q13591 ([UniProt](#), [ExPASy](#))

**NCBI Accession:** NP\_003957.2

**KEGG:** hsa:9037

# Datasheet

Version: 2.0.0

Revision date: 02 Jun 2025



**String:** [9606.ENSPO0000371936](#)

**Molecular Weight:** Calculated MW: 121 kDa

**Buffer:** PBS containing 0.09% sodium azide.

**Specificity:** Predicted to react with Rat SEMA5A.

**Note:** THIS PRODUCT IS FOR RESEARCH USE ONLY. NOT FOR USE IN DIAGNOSTIC, THERAPEUTIC OR COSMETIC PROCEDURES. NOT FOR HUMAN OR ANIMAL CONSUMPTION.

For Reference Only