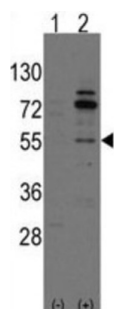
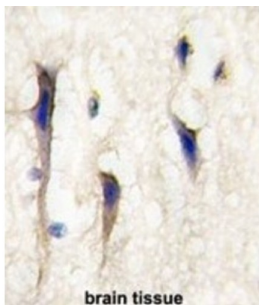


Rho Guanine Nucleotide Exchange Factor 9 (ARHGEF9) Antibody

Catalogue No.: abx031647



ARHGEF9 belongs to a family of Rho-like GTPases that act as molecular switches by cycling from the active GTP-bound state to the inactive GDP-bound state. These proteins are key regulators of the actin cytoskeleton and are involved in cell signaling.

Target:	Rho Guanine Nucleotide Exchange Factor 9 (ARHGEF9)
Clonality:	Polyclonal
Reactivity:	Rat
Tested Applications:	ELISA, WB, IHC
Host:	Rabbit
Recommended dilutions:	WB: 1/1000, IHC-P: 1/10 - 1/50. Not tested in IHC-F. Optimal dilutions/concentrations should be determined by the end user.
Conjugation:	Unconjugated
Immunogen:	KLH-conjugated synthetic peptide between 274-303 amino acids from the Central region of human Arhgef9.
Isotype:	IgG
Form:	Liquid

Datasheet

Version: 4.0.0

Revision date: 24 Aug 2025



Purification:	Purified through a protein A column, followed by peptide affinity purification.
Storage:	Aliquot and store at -20°C. Avoid repeated freeze/thaw cycles.
UniProt Primary AC:	Q9QX73 (UniProt , ExPASy)
Molecular Weight:	Calculated MW: 58.2 kDa
Buffer:	PBS containing 0.09% sodium azide.
Specificity:	Predicted to react with Human, Mouse and Cow Arhgef9.
Note:	THIS PRODUCT IS FOR RESEARCH USE ONLY. NOT FOR USE IN DIAGNOSTIC, THERAPEUTIC OR COSMETIC PROCEDURES. NOT FOR HUMAN OR ANIMAL CONSUMPTION.

For Reference Only