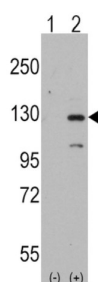
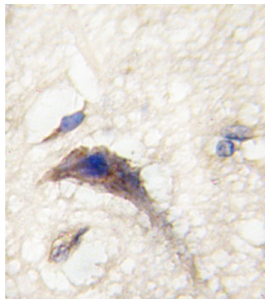


# Disheveled-Associated Activator of Morphogenesis 1 (DAAM1) Antibody

Catalogue No.: abx031655



Functions of the cell cortex, including motility, adhesion, and cytokinesis, are mediated by the reorganization of the actin cytoskeleton. Recent evidence suggests a role for the Formin homology (FH) proteins in these processes. DAAM1 contains FH domains and belongs to a novel FH protein subfamily implicated in cell polarity. Wnt/Fz signaling activates the small GTPase Rho, a key regulator of cytoskeleton architecture, to control cell polarity and movement during development. Activation requires Dvl-Rho complex formation, an assembly mediated by DAAM1, which is thought to function as a scaffolding protein.

**Target:** Disheveled-Associated Activator of Morphogenesis 1 (DAAM1)

**Clonality:** Polyclonal

**Reactivity:** Human

**Tested Applications:** ELISA, WB, IHC

**Host:** Rabbit

**Recommended dilutions:** WB: 1/1000, IHC-P: 1/10 - 1/50. Not tested in IHC-F. Optimal dilutions/concentrations should be determined by the end user.

**Conjugation:** Unconjugated

**Immunogen:** KLH-conjugated synthetic peptide between 45-74 amino acids from the N-terminal region of human DAAM1.

# Datasheet

Version: 2.0.0  
Revision date: 25 Jun 2025



Isotype:	IgG
Form:	Liquid
Purification:	Purified through a protein A column, followed by peptide affinity purification.
Storage:	Aliquot and store at -20°C. Avoid repeated freeze/thaw cycles.
UniProt Primary AC:	Q9Y4D1 ( <a href="#">UniProt</a> , <a href="#">ExPASy</a> )
Gene Symbol:	DAAM1
String:	<a href="#">9606.ENSP00000378557</a>
Molecular Weight:	Calculated MW: 123 kDa
Buffer:	PBS containing 0.09% sodium azide.
Specificity:	Predicted to react with Mouse DAAM1.
Note:	THIS PRODUCT IS FOR RESEARCH USE ONLY. NOT FOR USE IN DIAGNOSTIC, THERAPEUTIC OR COSMETIC PROCEDURES. NOT FOR HUMAN OR ANIMAL CONSUMPTION.

For Reference Only