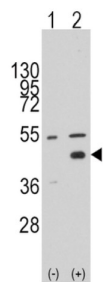
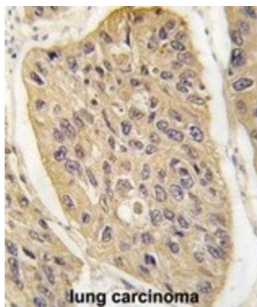


# Datasheet

Version: 3.0.0  
Revision date: 29 Aug 2025

## Wnt Inhibitory Factor 1 (WIF1) Antibody

Catalogue No.: abx031660



WNT proteins are extracellular signaling molecules involved in the control of embryonic development. WIF1 is a secreted protein, which binds WNT proteins and inhibits their activities. This protein contains a WNT inhibitory factor (WIF) domain and 5 epidermal growth factor (EGF) like domains. It may be involved in mesoderm segmentation. This protein is found to be present in fish, amphibia and mammals.

**Target:** Wnt Inhibitory Factor 1 (WIF1)

**Clonality:** Polyclonal

**Reactivity:** Human

**Tested Applications:** ELISA, WB, IHC

**Host:** Rabbit

**Recommended dilutions:** WB: 1/1000, IHC-P: 1/10 - 1/50. Not tested in IHC-F. Optimal dilutions/concentrations should be determined by the end user.

**Conjugation:** Unconjugated

**Immunogen:** KLH-conjugated synthetic peptide between 51-80 amino acids from the N-terminal region of human WIF1.

**Isotype:** IgG

# Datasheet

Version: 3.0.0  
Revision date: 29 Aug 2025



<b>Form:</b>	Liquid
<b>Purification:</b>	Purified through a protein A column, followed by peptide affinity purification.
<b>Storage:</b>	Aliquot and store at -20°C. Avoid repeated freeze/thaw cycles.
<b>UniProt Primary AC:</b>	Q9Y5W5 ( <a href="#">UniProt</a> , <a href="#">ExPASy</a> )
<b>Gene Symbol:</b>	WIF1
<b>String:</b>	<a href="#">9606.ENSP00000286574</a>
<b>Molecular Weight:</b>	Calculated MW: 41.5 kDa
<b>Buffer:</b>	PBS containing 0.09% sodium azide.
<b>Specificity:</b>	Predicted to react with Mouse, Rat, Zebrafish and Xenopus WIF1.
<b>Note:</b>	THIS PRODUCT IS FOR RESEARCH USE ONLY. NOT FOR USE IN DIAGNOSTIC, THERAPEUTIC OR COSMETIC PROCEDURES. NOT FOR HUMAN OR ANIMAL CONSUMPTION.

For Reference Only