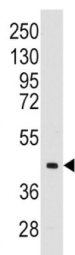
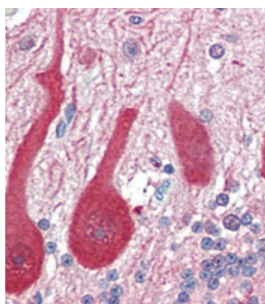


Aldolase C, Fructose Bisphosphate (ALDOC) Antibody

Catalogue No.: abx031675



ALDOC is a member of the fructose-biphosphate aldolase protein family. Expressed specifically in the hippocampus and Purkinje cells of the brain, this protein is a glycolytic enzyme that catalyzes the reversible aldol cleavage of fructose-1, 6-biphosphate and fructose 1-phosphate to dihydroxyacetone phosphate and either glyceraldehyde-3-phosphate or glyceraldehyde, respectively.

Target: Aldolase C, Fructose Bisphosphate (ALDOC)

Clonality: Polyclonal

Reactivity: Human

Tested Applications: ELISA, WB, IHC

Host: Rabbit

Recommended dilutions: WB: 1/1000, IHC-P: 1/10 - 1/50. Not tested in IHC-F. Optimal dilutions/concentrations should be determined by the end user.

Conjugation: Unconjugated

Immunogen: KLH-conjugated synthetic peptide between 300-333 amino acids from the C-terminal region of human ALDOC.

Isotype: IgG

Datasheet

Version: 2.0.0

Revision date: 24 May 2025



Form:	Liquid
Purification:	Purified Rabbit Polyclonal Antibody.
Storage:	Aliquot and store at -20°C. Avoid repeated freeze/thaw cycles.
UniProt Primary AC:	P09972 (UniProt , ExPASy)
NCBI Accession:	NP_005156.1
KEGG:	hsa:230
String:	9606.ENSP00000226253
Molecular Weight:	Calculated MW: 39.5 kDa
Buffer:	PBS containing 0.09% sodium azide.
Specificity:	Predicted to react with Mouse, Rat and Monkey ALDOC.
Note:	THIS PRODUCT IS FOR RESEARCH USE ONLY. NOT FOR USE IN DIAGNOSTIC, THERAPEUTIC OR COSMETIC PROCEDURES. NOT FOR HUMAN OR ANIMAL CONSUMPTION.

For Reference Only