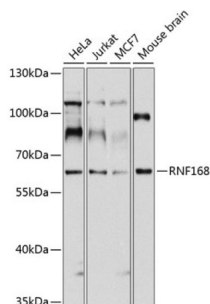


Ring Finger Protein 168 (RNF168) Antibody

Catalogue No.: abx002568



Western blot analysis of various lysates using RNF168 Antibody at 1/1000 dilution. Secondary antibody: HRP-conjugated Goat anti-Rabbit IgG (H+L) at 1/10000 dilution. Lysates/proteins: 25 µg per lane. Blocking buffer: 3% nonfat dry milk in TBST. Exposure time: 10s.

RNF168 Antibody is a Rabbit Polyclonal antibody against RNF168. This gene encodes an E3 ubiquitin ligase protein that contains a RING finger, a motif present in a variety of functionally distinct proteins and known to be involved in protein-DNA and protein-protein interactions. The protein is involved in DNA double-strand break (DSB) repair. Mutations in this gene result in Riddle syndrome.

Target:	Ring Finger Protein 168 (RNF168)
Clonality:	Polyclonal
Reactivity:	Human, Mouse
Tested Applications:	ELISA, WB
Host:	Rabbit
Recommended dilutions:	ELISA: 1 µg/ml, WB: 1/1000 - 1/2000. Optimal dilutions/concentrations should be determined by the end user.
Conjugation:	Unconjugated
Immunogen:	Recombinant protein corresponding to RNF168. The exact sequence is proprietary.
Isotype:	IgG
Form:	Liquid
Purification:	Purified by affinity chromatography.
Storage:	Aliquot and store at -20°C. Avoid repeated freeze/thaw cycles.
UniProt Primary AC:	Q8IYW5 (UniProt , ExPASy)
Gene Symbol:	RNF168

Datasheet

Version: 5.0.0
Revision date: 03 Oct 2025



GeneID: [165918](#)

NCBI Accession: NP_689830.2

KEGG: hsa:165918

String: [9606.ENSP00000320898](#)

Molecular Weight: Calculated MW: 65 kDa
Observed MW: 65 kDa

Buffer: PBS, pH 7.3, containing 0.02% sodium azide, 50% glycerol.

Concentration: > 0.2 mg/ml

Note: THIS PRODUCT IS FOR RESEARCH USE ONLY. NOT FOR USE IN DIAGNOSTIC, THERAPEUTIC OR COSMETIC PROCEDURES. NOT FOR HUMAN OR ANIMAL CONSUMPTION.

For Reference Only