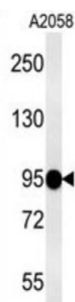


Semaphorin 6A (SEMA6A) Antibody

Catalogue No.: abx031679



SEMA6A belongs to a subfamily characterized by an extracellular semaphorin domain, a transmembrane domain, and a long cytoplasmic tail. Members of this class can repel sympathetic and dorsal root ganglion axons in vitro, consistent with a traditional role as guidance signals. However, the length of the cytoplasmic tail, which includes an EVL-binding site in SEMA6A and an Src-binding site in SEMA6B, suggests that these semaphorins may also function as receptors. SEMA6A is expressed in developing neural tissue and is required for proper development of the thalamocortical projection. SEMA6A directly links the Ena/VASP and the semaphorin protein families since the SEMA6A protein is capable of selective binding to the protein EVL (Ena/VASP-like protein).

Target:	Semaphorin 6A (SEMA6A)
Clonality:	Polyclonal
Reactivity:	Human
Tested Applications:	ELISA, WB
Host:	Rabbit
Recommended dilutions:	WB: 1/1000. Optimal dilutions/concentrations should be determined by the end user.
Conjugation:	Unconjugated
Immunogen:	KLH-conjugated synthetic peptide between 29-57 amino acids from the N-terminal region of human SEMA6A.
Isotype:	IgG
Form:	Liquid
Purification:	Purified through a protein A column, followed by peptide affinity purification.
Storage:	Aliquot and store at -20°C. Avoid repeated freeze/thaw cycles.

Datasheet

Version: 2.0.0

Revision date: 16 Mar 2025



UniProt Primary AC: Q9H2E6 ([UniProt](#), [ExPASy](#))

Gene Symbol: SEMA6A

String: [9606.ENSP00000257414](#)

Molecular Weight: Calculated MW: 114 kDa

Buffer: PBS containing 0.09% sodium azide.

Specificity: Predicted to react with Mouse SEMA6A.

Note: THIS PRODUCT IS FOR RESEARCH USE ONLY. NOT FOR USE IN DIAGNOSTIC, THERAPEUTIC OR COSMETIC PROCEDURES. NOT FOR HUMAN OR ANIMAL CONSUMPTION.

For Reference Only