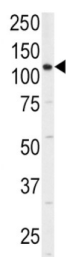
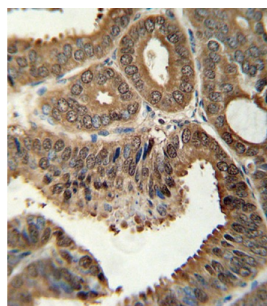
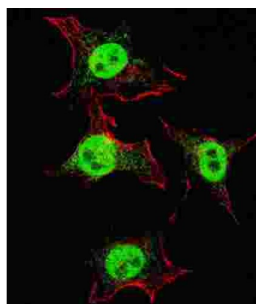


## Integrin Alpha 6 (ITGA6) Antibody

Catalogue No.: abx031688



The ITGA6 protein product is the integrin alpha chain alpha 6. Integrins are integral cell-surface proteins composed of an alpha chain and a beta chain. A given chain may combine with multiple partners resulting in different integrins. For example, alpha 6 may combine with beta 4 in the integrin referred to as TSP180, or with beta 1 in the integrin VLA-6. Integrins are known to participate in cell adhesion as well as cell-surface mediated signalling.

**Target:** Integrin Alpha 6 (ITGA6)

**Clonality:** Polyclonal

**Reactivity:** Human

**Tested Applications:** ELISA, WB, IHC, IF/ICC

**Host:** Rabbit

**Recommended dilutions:** WB: 1/1000, IHC-P: 1/10 - 1/50, IF/ICC: 1/200. Not tested in IHC-F. Optimal dilutions/concentrations should be determined by the end user.

# Datasheet

Version: 1.0.0  
Revision date: 30 Apr 2025



|                            |  |
|----------------------------|--|
| <b>Conjugation:</b>        | Unconjugated   |
| <b>Immunogen:</b>          | KLH-conjugated synthetic peptide between 1043-1072 amino acids from human ITGA6.   |
| <b>Isotype:</b>            | IgG  |
| <b>Form:</b>               | Liquid   |
| <b>Purification:</b>       | Purified through a protein A column, followed by peptide affinity purification.  |
| <b>Storage:</b>            | Aliquot and store at -20°C. Avoid repeated freeze/thaw cycles.   |
| <b>UniProt Primary AC:</b> | P23229 ( <a href="#">UniProt</a> , <a href="#">ExPASy</a> )  |
| <b>Gene Symbol:</b>        | ITGA6  |
| <b>NCBI Accession:</b>     | NP_000201.2, NP_001073286.1  |
| <b>Buffer:</b>             | PBS containing 0.09% sodium azide.   |
| <b>Specificity:</b>        | Predicted to react with Chicken ITGA6.   |
| <b>Note:</b>               | THIS PRODUCT IS FOR RESEARCH USE ONLY. NOT FOR USE IN DIAGNOSTIC, THERAPEUTIC OR COSMETIC PROCEDURES. NOT FOR HUMAN OR ANIMAL CONSUMPTION. |