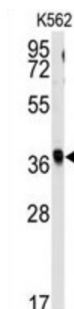
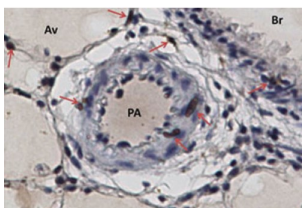
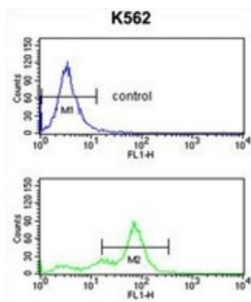


Replication Factor C Subunit 2 (RFC2) Antibody

Catalogue No.: abx031710



The elongation of primed DNA templates by DNA polymerase delta and epsilon requires the action of the accessory proteins, proliferating cell nuclear antigen (PCNA) and replication factor C (RFC). RFC, also called activator 1, is a protein complex consisting of five distinct subunits of 145, 40, 38, 37, and 36.5 kD. RFC2 is the 40 kD subunit, which has been shown to be responsible for binding ATP. Deletion of RFC2 gene has been associated with Williams syndrome.

Target: Replication Factor C Subunit 2 (RFC2)

Clonality: Polyclonal

Reactivity: Human

Tested Applications: ELISA, WB, IHC, FCM

Host: Rabbit

Recommended dilutions: WB: 1/1000, IHC-P: 1/50 - 1/100, FCM: 1/10 - 1/50. Not tested in IHC-F. Optimal dilutions/concentrations should be determined by the end user.

Datasheet

Version: 4.0.0
Revision date: 21 Aug 2025



Conjugation:	Unconjugated
Immunogen:	KLH-conjugated synthetic peptide between 17-46 amino acids from the N-terminal region of human RFC2.
Isotype:	IgG
Form:	Liquid
Purification:	Purified Rabbit Polyclonal Antibody.
Storage:	Aliquot and store at -20°C. Avoid repeated freeze/thaw cycles.
UniProt Primary AC:	P35250 (UniProt , ExPASy)
KEGG:	hsa:5982
String:	9606.ENSP00000055077
Molecular Weight:	Calculated MW: 39.2 kDa
Buffer:	PBS containing 0.09% sodium azide.
Specificity:	Predicted to react with Rat and Cow RFC2.
Note:	THIS PRODUCT IS FOR RESEARCH USE ONLY. NOT FOR USE IN DIAGNOSTIC, THERAPEUTIC OR COSMETIC PROCEDURES. NOT FOR HUMAN OR ANIMAL CONSUMPTION.