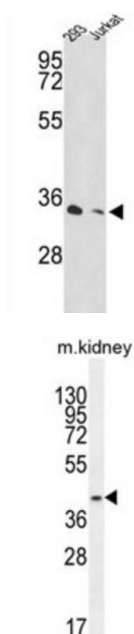
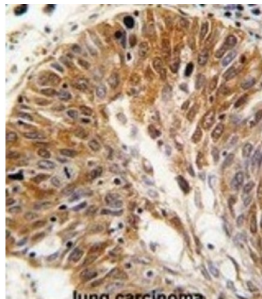


## 26S Proteasome Non-ATPase Regulatory Subunit 11 (PSMD11) Antibody

Catalogue No.: abx031717



26S Proteasome Non-ATPase Regulatory Subunit 11 (PSMD11) Antibody is a Rabbit Polyclonal against 26S Proteasome Non-ATPase Regulatory Subunit 11 (PSMD11). The 26S proteasome (PSMD11) is a multicatalytic proteinase complex with a highly ordered structure composed of 2 complexes, a 20S core and a 19S regulator. The 20S core is composed of 4 rings of 28 non-identical subunits; 2 rings are composed of 7 alpha subunits and 2 rings are composed of 7 beta subunits. The 19S regulator is composed of a base, which contains 6 ATPase subunits and 2 non-ATPase subunits, and a lid, which contains up to 10 non-ATPase subunits. Proteasomes are distributed throughout eukaryotic cells at a high concentration and cleave peptides in an ATP/ubiquitin-dependent process in a non-lysosomal pathway. An essential function of a modified proteasome, the immunoproteasome, is the processing of class I MHC peptides. The protein is a non-ATPase subunit of the 19S regulator.

**Target:** 26S Proteasome Non-ATPase Regulatory Subunit 11 (PSMD11)

**Clonality:** Polyclonal

**Reactivity:** Human, Mouse

# Datasheet

Version: 4.0.0  
Revision date: 25 Apr 2025



<b>Tested Applications:</b>	ELISA, WB, IHC
<b>Host:</b>	Rabbit
<b>Recommended dilutions:</b>	WB: 1/1000, IHC-P: 1/50 - 1/100. Not tested in IHC-F. Optimal dilutions/concentrations should be determined by the end user.
<b>Conjugation:</b>	Unconjugated
<b>Immunogen:</b>	KLH-conjugated synthetic peptide between 288-317 amino acids from the C-terminal region of human PSMD11.
<b>Isotype:</b>	IgG
<b>Form:</b>	Liquid
<b>Purification:</b>	Purified Rabbit Polyclonal Antibody.
<b>Storage:</b>	Aliquot and store at -20°C. Avoid repeated freeze/thaw cycles.
<b>UniProt Primary AC:</b>	O00231 ( <a href="#">UniProt</a> , <a href="#">ExPASy</a> )
<b>Gene Symbol:</b>	PSMD11
<b>GeneID:</b>	<a href="#">5717</a>
<b>OMIM:</b>	<a href="#">604449</a>
<b>NCBI Accession:</b>	NP_001257411.1, NM_001270482.1
<b>HGNC:</b>	9556
<b>KEGG:</b>	hsa:5717
<b>Ensembl:</b>	ENSG00000108671
<b>String:</b>	<a href="#">9606.ENSP00000261712</a>
<b>Molecular Weight:</b>	Calculated MW: 47.5 kDa
<b>Buffer:</b>	PBS containing 0.09% sodium azide.
<b>Specificity:</b>	Predicted to react with Rat and Cow PSMD11.

# Datasheet

Version: 4.0.0

Revision date: 25 Apr 2025



**Note:**

THIS PRODUCT IS FOR RESEARCH USE ONLY. NOT FOR USE IN DIAGNOSTIC, THERAPEUTIC OR COSMETIC PROCEDURES. NOT FOR HUMAN OR ANIMAL CONSUMPTION.

For Reference Only