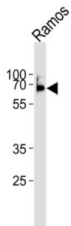
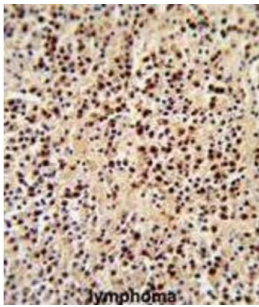
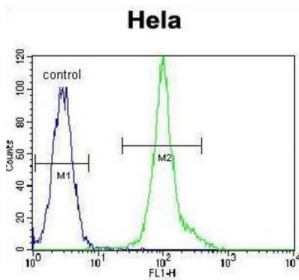


## Proto-Oncogene Tyrosine-Protein Kinase LCK (LCK) Antibody

Catalogue No.: abx031732



LCK is a member of the Src family of protein tyrosine kinases (PTKs). This protein is a key signaling molecule in the selection and maturation of developing T-cells. It contains N-terminal sites for myristylation and palmitoylation, a PTK domain, and SH2 and SH3 domains which are involved in mediating protein-protein interactions with phosphotyrosine-containing and proline-rich motifs, respectively. The protein localizes to the plasma membrane and pericentrosomal vesicles, and binds to cell surface receptors, including CD4 and CD8, and other signaling molecules.

**Target:** Proto-Oncogene Tyrosine-Protein Kinase LCK (LCK)

**Clonality:** Polyclonal

**Reactivity:** Human

**Tested Applications:** ELISA, WB, IHC, FCM

**Host:** Rabbit

# Datasheet

Version: 2.0.0  
Revision date: 27 Sep 2025



**Recommended dilutions:** WB: 1/1000, IHC-P: 1/50 - 1/100, FCM: 1/10 - 1/50. Not tested in IHC-F. Optimal dilutions/concentrations should be determined by the end user.

**Conjugation:** Unconjugated

**Immunogen:** KLH-conjugated synthetic peptide between 480-509 amino acids from the C-terminal region of human LCK.

**Isotype:** IgG

**Form:** Liquid

**Purification:** Purified Rabbit Polyclonal Antibody.

**Storage:** Aliquot and store at -20°C. Avoid repeated freeze/thaw cycles.

**UniProt Primary AC:** P06239 ([UniProt](#), [ExPASy](#))

**NCBI Accession:** NP\_001036236.1, NP\_005347.3

**KEGG:** hsa:3932

**String:** [9606.ENSP00000337825](#)

**Molecular Weight:** Calculated MW: 58 kDa

**Buffer:** PBS containing 0.09% sodium azide.

**Note:** THIS PRODUCT IS FOR RESEARCH USE ONLY. NOT FOR USE IN DIAGNOSTIC, THERAPEUTIC OR COSMETIC PROCEDURES. NOT FOR HUMAN OR ANIMAL CONSUMPTION.