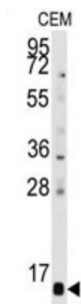


Prefoldin Subunit 6 (PFDN6) Antibody

Catalogue No.: abx031737



PFDN6 binds specifically to cytosolic chaperonin (c-CPN) and transfers target proteins to it. This protein also binds to nascent polypeptide chain and promotes folding in an environment in which there are many competing pathways for nonnative proteins.

Target:	Prefoldin Subunit 6 (PFDN6)
Clonality:	Polyclonal
Reactivity:	Human
Tested Applications:	ELISA, WB
Host:	Rabbit
Recommended dilutions:	WB: 1/1000. Optimal dilutions/concentrations should be determined by the end user.
Conjugation:	Unconjugated
Immunogen:	KLH-conjugated synthetic peptide between 6-34 amino acids from the N-terminal region of human PFDN6.
Isotype:	IgG
Form:	Liquid
Purification:	Purified Rabbit Polyclonal Antibody.
Storage:	Aliquot and store at -20°C. Avoid repeated freeze/thaw cycles.
UniProt Primary AC:	O15212 (UniProt , ExPASy)
Gene Symbol:	PFDN6

Datasheet

Version: 6.0.0

Revision date: 11 Aug 2025



NCBI Accession: NP_001172110.1, NP_001252524.1, NP_001252525.1, NP_055075.1

KEGG: hsa:10471

String: [9606.ENSP00000378563](#)

Molecular Weight: Calculated MW: 14.6 kDa

Buffer: PBS containing 0.09% sodium azide.

Specificity: Predicted to react with Mouse and Cow PFDN6.

Note: THIS PRODUCT IS FOR RESEARCH USE ONLY. NOT FOR USE IN DIAGNOSTIC, THERAPEUTIC OR COSMETIC PROCEDURES. NOT FOR HUMAN OR ANIMAL CONSUMPTION.

For Reference Only