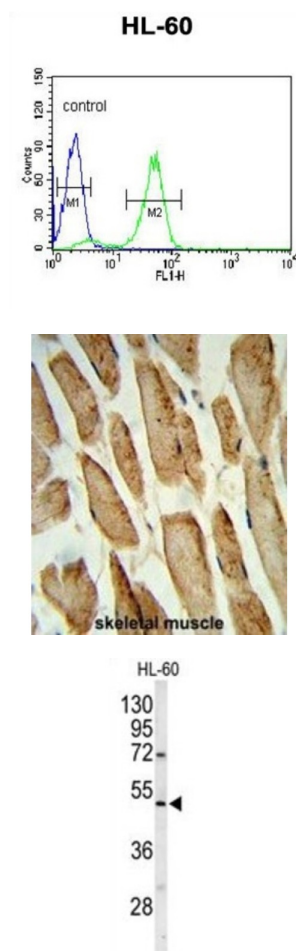


Polymerase DNA Directed Gamma 2 (POLG2) Antibody

Catalogue No.: abx031738



The accuracy of mitochondrial DNA (mtDNA) replication depends on the coordinated action of many nuclear-encoded proteins and on the correct balance of nucleotides within the mitochondrial matrix. mtDNA is replicated by DNA polymerase gamma, which is composed of a 140-kD catalytic subunit (POLG1) and a 55-kD accessory subunit (POLG2).

Target: Polymerase DNA Directed Gamma 2 (POLG2)

Clonality: Polyclonal

Reactivity: Human

Tested Applications: ELISA, WB, IHC, FCM

Host: Rabbit

Recommended dilutions: WB: 1/1000, IHC-P: 1/50 - 1/100, FCM: 1/10 - 1/50. Not tested in IHC-F. Optimal dilutions/concentrations should be determined by the end user.

Datasheet

Version: 2.0.0
Revision date: 20 Aug 2025



| | |
|----------------------------|--|
| Conjugation: | Unconjugated |
| Immunogen: | KLH-conjugated synthetic peptide between 348-376 amino acids from the C-terminal region of human POLG2. |
| Isotype: | IgG |
| Form: | Liquid |
| Purification: | Purified Rabbit Polyclonal Antibody. |
| Storage: | Aliquot and store at -20°C. Avoid repeated freeze/thaw cycles. |
| UniProt Primary AC: | Q9UHN1 (UniProt , ExPASy) |
| NCBI Accession: | NP_009146.2 |
| String: | 9606.ENSP00000442563 |
| Molecular Weight: | Calculated MW: 54.9 kDa |
| Buffer: | PBS containing 0.09% sodium azide. |
| Note: | THIS PRODUCT IS FOR RESEARCH USE ONLY. NOT FOR USE IN DIAGNOSTIC, THERAPEUTIC OR COSMETIC PROCEDURES. NOT FOR HUMAN OR ANIMAL CONSUMPTION. |