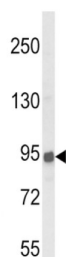
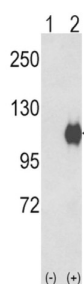
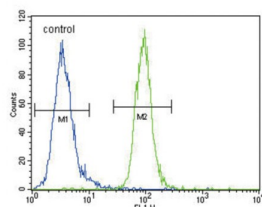


# Ectonucleotide Pyrophosphatase/phosphodiesterase 2 (ENPP2) Antibody

Catalogue No.: abx031747



ENPP2 functions as both a phosphodiesterase, which cleaves phosphodiester bonds at the 5' end of oligonucleotides, and a phospholipase, which catalyzes production of lysophosphatidic acid (LPA) in extracellular fluids. LPA evokes growth factor-like responses including stimulation of cell proliferation and chemotaxis. This protein stimulates the motility of tumor cells and has angiogenic properties, and its expression is upregulated in several kinds of carcinomas. The protein is secreted and further processed to make the biologically active form.

**Target:** Ectonucleotide Pyrophosphatase/phosphodiesterase 2 (ENPP2)

**Clonality:** Polyclonal

**Reactivity:** Human

**Tested Applications:** ELISA, WB, FCM

**Host:** Rabbit

# Datasheet

Version: 2.0.0

Revision date: 26 Jun 2025



**Recommended dilutions:** WB: 1/2000, FCM: 1/10 - 1/50. Optimal dilutions/concentrations should be determined by the end user.

**Conjugation:** Unconjugated

**Immunogen:** KLH-conjugated synthetic peptide between 377-406 amino acids from the Central region of human ENPP2.

**Isotype:** IgG

**Form:** Liquid

**Purification:** Purified through a protein A column, followed by peptide affinity purification.

**Storage:** Aliquot and store at -20°C. Avoid repeated freeze/thaw cycles.

**UniProt Primary AC:** Q13822 ([UniProt](#), [ExPASy](#))

**KEGG:** hsa:5168

**String:** [9606.ENSP00000259486](#)

**Molecular Weight:** Calculated MW: 99 kDa

**Buffer:** PBS containing 0.09% sodium azide.

**Note:** THIS PRODUCT IS FOR RESEARCH USE ONLY. NOT FOR USE IN DIAGNOSTIC, THERAPEUTIC OR COSMETIC PROCEDURES. NOT FOR HUMAN OR ANIMAL CONSUMPTION.