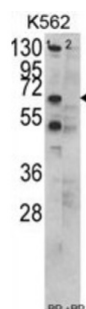
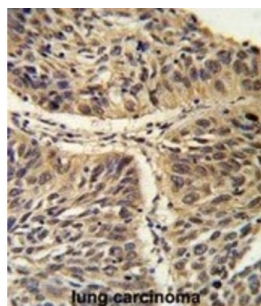
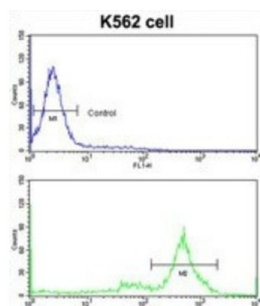


T-Complex Protein 1 Subunit Gamma (CCT3) Antibody

Catalogue No.: abx031772



CCT3 is a molecular chaperone that is a member of the chaperonin containing TCP1 complex (CCT), also known as the TCP1 ring complex (TRiC). This complex consists of two identical stacked rings, each containing eight different proteins. Unfolded polypeptides enter the central cavity of the complex and are folded in an ATP-dependent manner. The complex folds various proteins, including actin and tubulin.

Target: T-Complex Protein 1 Subunit Gamma (CCT3)

Clonality: Polyclonal

Reactivity: Human

Tested Applications: ELISA, WB, IHC, FCM

Host: Rabbit

Recommended dilutions: WB: 1/1000, IHC-P: 1/50 - 1/100, FCM: 1/10 - 1/50. Not tested in IHC-F. Optimal dilutions/concentrations should be determined by the end user.

Datasheet

Version: 4.0.0
Revision date: 23 Sep 2025



| | |
|----------------------------|--|
| Conjugation: | Unconjugated |
| Immunogen: | KLH-conjugated synthetic peptide between 509-536 amino acids from the C-terminal region of human CCT3. |
| Isotype: | IgG |
| Form: | Liquid |
| Purification: | Purified through a protein A column, followed by peptide affinity purification. |
| Storage: | Aliquot and store at -20°C. Avoid repeated freeze/thaw cycles. |
| UniProt Primary AC: | P49368 (UniProt , ExPASy) |
| KEGG: | hsa:7203 |
| String: | 9606.ENSP00000295688 |
| Molecular Weight: | Calculated MW: 60.5 kDa |
| Buffer: | PBS containing 0.09% sodium azide. |
| Specificity: | Predicted to react with Cow and Monkey CCT3. |
| Note: | THIS PRODUCT IS FOR RESEARCH USE ONLY. NOT FOR USE IN DIAGNOSTIC, THERAPEUTIC OR COSMETIC PROCEDURES. NOT FOR HUMAN OR ANIMAL CONSUMPTION. |