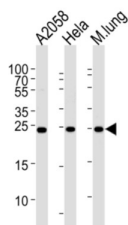


Rho GDP-Dissociation Inhibitor 1 (ARHGDIA) Antibody

Catalogue No.: abx031777



This product is currently in development. The lead time for this product may be several months. Please contact us at info@abbexa.com for an updated lead time before purchasing this product.

This product is currently in development. The lead time for this product may be several months. Please contact us at info@abbexa.com for an updated lead time before purchasing this product.

ARHGDIA belong to the RAS gene superfamily encoding small guanine nucleotide exchange (GTP/GDP) factors. The ARH proteins may be kept in the inactive, GDP-bound state by interaction with GDP dissociation inhibitors, such as ARHGDIA.

Target:	Rho GDP-Dissociation Inhibitor 1 (ARHGDIA)
Clonality:	Polyclonal
Reactivity:	Human, Mouse
Tested Applications:	ELISA, WB, IHC
Host:	Rabbit
Recommended dilutions:	WB: 1/1000, IHC-P: 1/100 - 1/500. Not tested in IHC-F. Optimal dilutions/concentrations should be determined by the end user.
Conjugation:	Unconjugated
Immunogen:	KLH-conjugated synthetic peptide between 25-53 amino acids from the N-terminal region of human ARHGDIA.
Isotype:	IgG
Form:	Liquid
Purification:	Purified through a protein A column, followed by peptide affinity purification.

Datasheet

Version: 3.0.0

Revision date: 09 Sep 2025



Storage: Aliquot and store at -20°C. Avoid repeated freeze/thaw cycles.

UniProt Primary AC: P52565 ([UniProt](#), [ExPASy](#))

NCBI Accession: NP_001172006.1, NP_001172007.1, NP_004300.1

KEGG: hsa:396

String: [9606.ENSP00000269321](#)

Molecular Weight: Calculated MW: 23.2 kDa

Buffer: PBS containing 0.09% sodium azide.

Specificity: Predicted to react with Rat, Cow and Monkey ARHGDI.

Note: THIS PRODUCT IS FOR RESEARCH USE ONLY. NOT FOR USE IN DIAGNOSTIC, THERAPEUTIC OR COSMETIC PROCEDURES. NOT FOR HUMAN OR ANIMAL CONSUMPTION.

For Reference Only