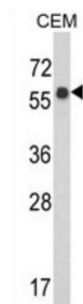


WD Repeat-Containing Protein 1 (WDR1) Antibody

Catalogue No.: abx031792



WDR1 is a protein containing 9 WD repeats. WD repeats are approximately 30 to 40-amino acid domains containing several conserved residues, mostly including a trp-asp at the C-terminal end. WD domains are involved in protein-protein interactions. This protein may help induce the disassembly of actin filaments.

Target: WD Repeat-Containing Protein 1 (WDR1)

Clonality: Polyclonal

Reactivity: Human

Tested Applications: ELISA, WB

Host: Rabbit

Recommended dilutions: WB: 1/1000. Optimal dilutions/concentrations should be determined by the end user.

Conjugation: Unconjugated

Immunogen: KLH-conjugated synthetic peptide between 548-577 amino acids from the C-terminal region of human WDR1.

Isotype: IgG

Form: Liquid

Purification: Purified Rabbit Polyclonal Antibody.

Storage: Aliquot and store at -20°C. Avoid repeated freeze/thaw cycles.

UniProt Primary AC: O75083 ([UniProt](#), [ExPASy](#))

Gene Symbol: WDR1

Datasheet

Version: 4.0.0

Revision date: 07 Sep 2025



KEGG: hsa:9948

String: [9606.ENSP00000427687](#)

Molecular Weight: Calculated MW: 66.2 kDa

Buffer: PBS containing 0.09% sodium azide.

Specificity: Predicted to react with Cow WDR1.

Note: THIS PRODUCT IS FOR RESEARCH USE ONLY. NOT FOR USE IN DIAGNOSTIC, THERAPEUTIC OR COSMETIC PROCEDURES. NOT FOR HUMAN OR ANIMAL CONSUMPTION.

For Reference Only